

CHANNEL TYPES

PROJECT CHECKLIST

STYLE:

- ☐ FLUSH CHANNEL
- ☐ FLUSH CHANNEL WITH DIFFUSER
- ☐ RECESSED CHANNEL WITH DIFFUSER

LENGTH: _____

MOUNTING TYPE:

- ☐ PUSH LATCH / MAGNET MOUNTING
- ☐ CORE MOUNTING
- ☐ TRIMLESS (RECESSED CHANNEL ONLY)

DEVICE 1 TYPE: _____

DEVICE 1 LOCATION: _____

DEVICE 2 TYPE: _____

DEVICE 2 LOCATION: _____

DEVICE 3 TYPE: _____

DEVICE 3 LOCATION: _____

DEVICE 4 TYPE: _____

DEVICE 4 LOCATION: _____

DEVICE 5 TYPE: _____

DEVICE 5 LOCATION: _____

END CONDITIONS:

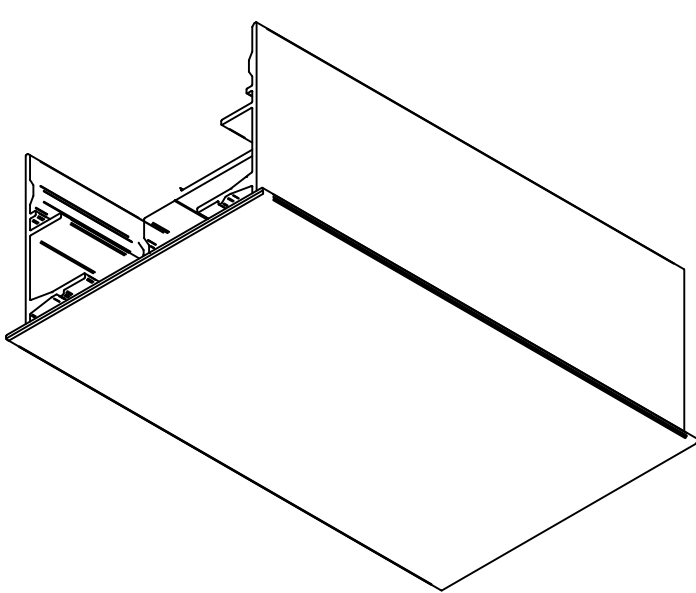
- ☐ NO END CAPS
- ☐ LEFT END CAP
- ☐ RIGHT END CAP
- ☐ BOTH END CAPS

HOUSING COLOR (RECESSED CHANNEL):

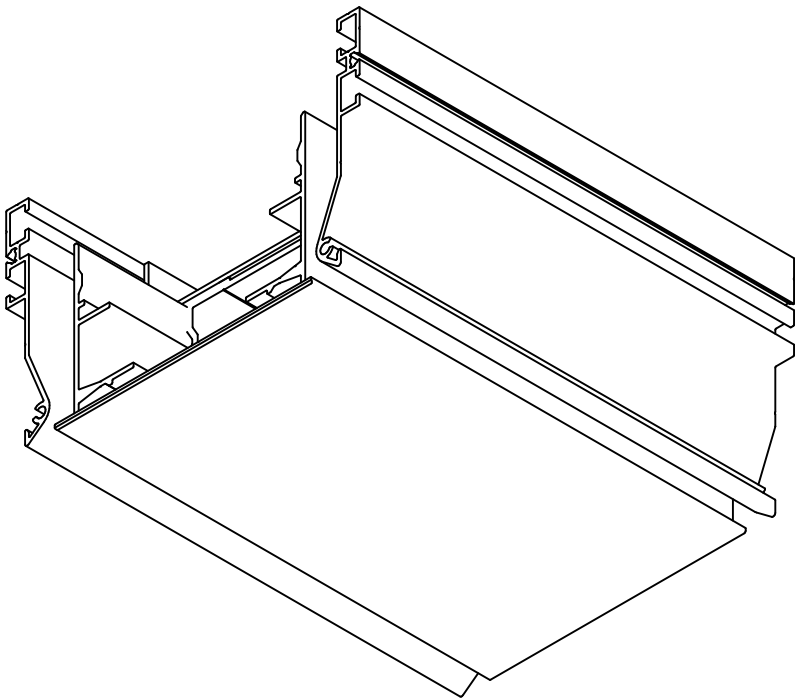
- ☐ BLACK POLYMER - B17
- ☐ WHITE POLYMER - RAL 9016

CHANNEL FINISH:

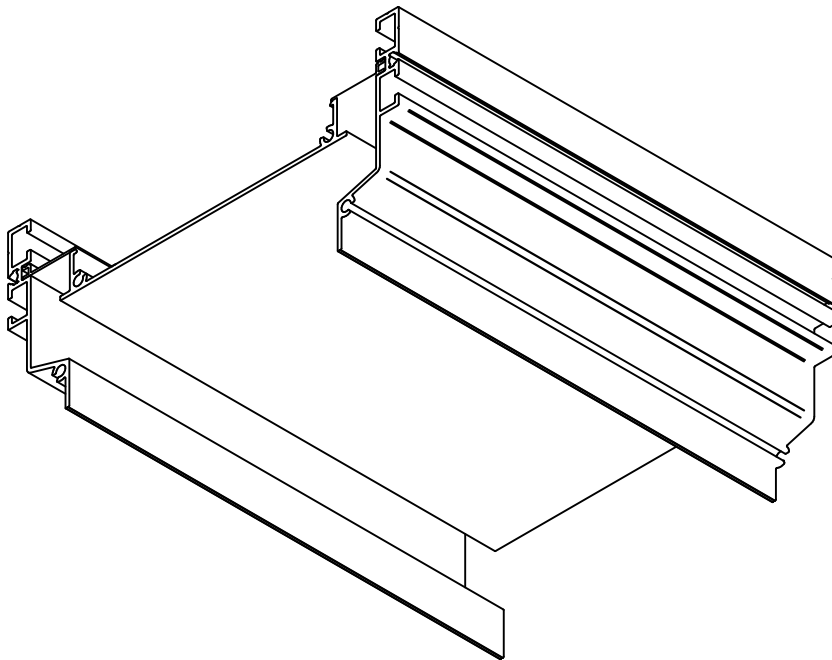
- ☐ BLACK - PRICE B17
- ☐ WHITE - RAL 9016
- ☐ ANODIZED - CLEAR SATIN
- ☐ ANODIZED - CHAMPAGNE SATIN
- ☐ ANODIZED - LIGHT BRONZE SATIN
- ☐ ANODIZED - MEDIUM BRONZE SATIN
- ☐ ANODIZED - DARK BRONZE SATIN
- ☐ ANODIZED - BLACK SATIN



ISO VIEW
FLUSH CHANNEL



ISO VIEW
FLUSH CHANNEL WITH DIFFUSER



ISO VIEW
RECESSED CHANNEL WITH DIFFUSER

CONSTRUCTION:

- FLUSH CHANNEL
 - o ALUMINUM EXTRUSION
 - o ALUMINUM SHEET
 - o STEEL SHEET
- RECESSED CHANNEL
 - o ALUMINUM EXTRUSION
 - o ALUMINUM SHEET
 - o STEEL SHEET

FINISH:

- SIGHT BLOCK – BLACK
- END CAP SCREWS – MATCH CHANNEL FINISH
- ALL HARDWARE; MILL FINISH UNLESS OTHERWISE SPECIFIED

ELECTRICAL SERVICE

- SEE SPECIFIC NODE DEVICE REQUIREMENTS

MECHANICAL SERVICE

- CONTACT PRICE SALES REPRESENTATIVE

CONTROLS

- CONTROLS BY OTHERS

ASSEMBLY AND INSTALLATION

- ALL COMPONENTS SHOWN ARE FACTORY ASSEMBLED BY PARC UNLESS OTHERWISE NOTED
- ALL INSTALLATION BY OTHERS AND METHODS SHOWN ARE NOTIONAL
- (ASSY BY OTHERS); PROVIDED BY PARC, FIELD ASSEMBLED BY OTHERS
- (BY OTHERS); PROVIDED AND FIELD ASSEMBLED BY OTHERS

NOTES:

- DIMENSIONS SHOWN IN PARENTHESES ARE FOR REFERENCE ONLY (X.XX)
- METRIC DIMENSIONS SHOWN IN BRACKETS [X.XX]
- PRODUCT FINISH MAY VARY IN TONE, GLOSS AND TEXTURE; VARIATIONS ARE WITHIN PARC QUALITY STANDARDS
- TBC: DETAILS TO BE CONFIRMED
- REFERENCE SUBMITTAL 272380 FOR PLENUM DETAILS
- FLUSH CHANNEL WEIGHT = 2.3 KG / LIN. M
- FLUSH CHANNEL WITH DIFFUSER WEIGHT = 4.1 KG / LIN. M
- RECESSED CHANNEL WITH DIFFUSER WEIGHT = 2.6 KG / LIN. M

G	2022-02-08	JAC	MLH
F	2021-09-19	NLD	JAC
E	2021-03-19	NPT	MLH
D	2020-05-27	NPT	MLH
C	2020-03-25	NPT	MLH
B	2020-03-12	NPT	MLH
A	2019-11-27	NPT	MLH
REV	DATE	DRAWN BY	CHECKED BY

	ALL DIMENSIONS IN INCHES UNLESS OTHERWISE SPECIFIED
--	---

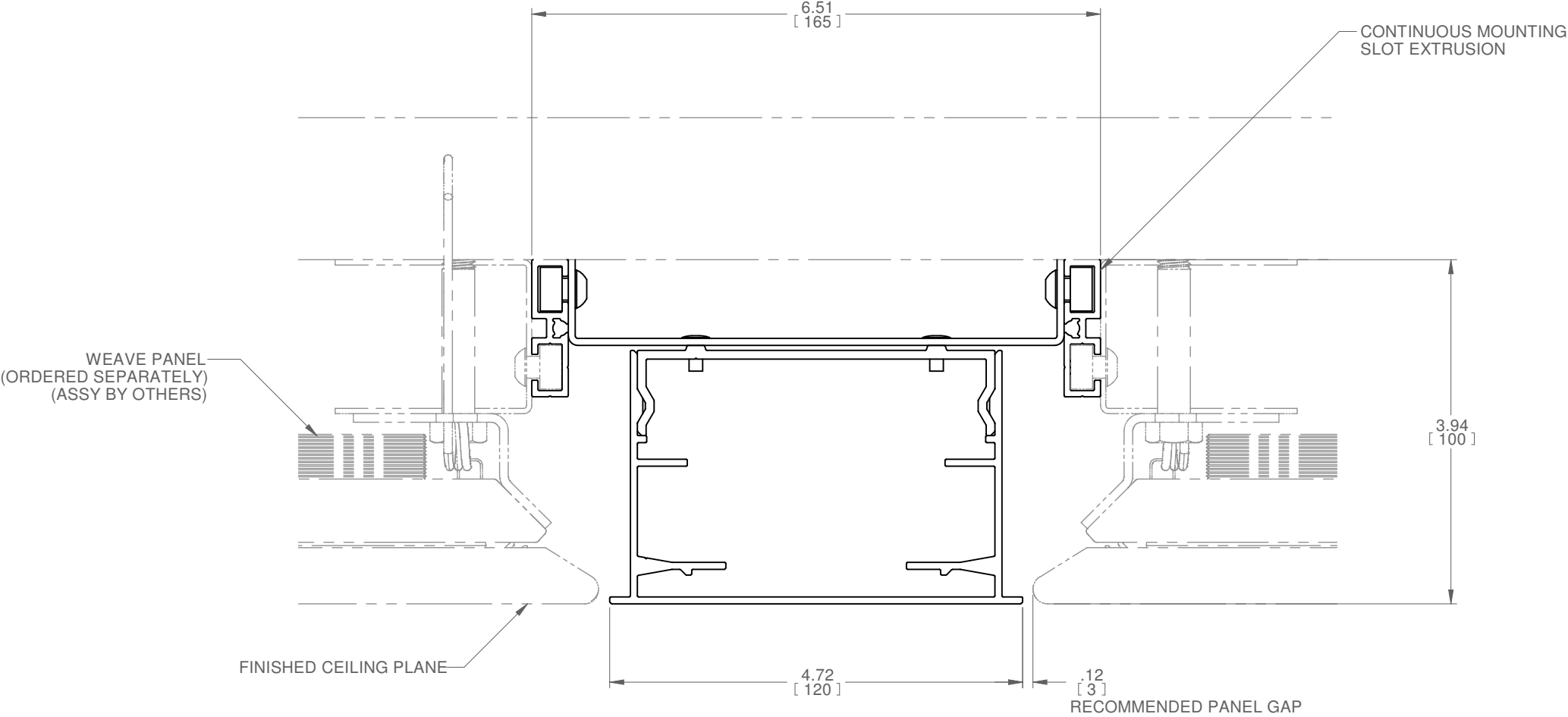
TOLERANCES UNLESS OTHERWISE SPECIFIED			
LINEAR	X.X ± .06	X.XX ± .03	X.XXX ± .01 INCHES
ANGULAR	X ± 1	X.X ± .5	X.XX ± .25 DEGREES

PROJECT

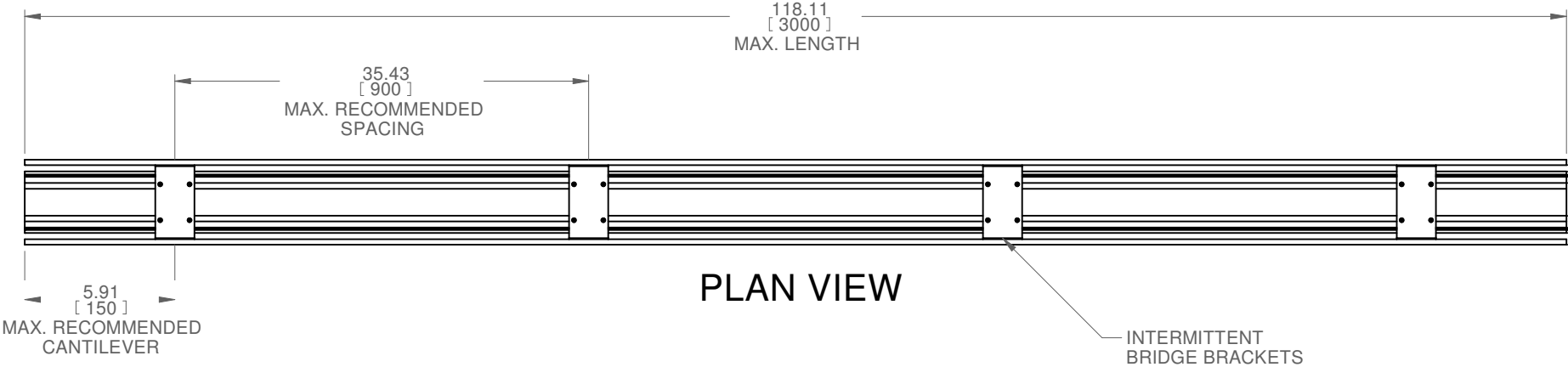
DRAWING TITLE
NODE CHANNEL

SUBMITTAL NUMBER	271710	SHEET 1 OF 9	SIZE B
© COPYRIGHT PRICE INDUSTRIES 2020			

FLUSH CHANNEL - CORE MOUNTING



ELEVATION VIEW



PLAN VIEW

- CONSTRUCTION:**
- FLUSH CHANNEL
 - o ALUMINUM EXTRUSION
 - o ALUMINUM SHEET
 - o STEEL SHEET
 - RECESSED CHANNEL
 - o ALUMINUM EXTRUSION
 - o ALUMINUM SHEET
 - o STEEL SHEET
- FINISH:**
- SIGHT BLOCK – BLACK
 - END CAP SCREWS – MATCH CHANNEL FINISH
 - ALL HARDWARE; MILL FINISH UNLESS OTHERWISE SPECIFIED
- ELECTRICAL SERVICE**
- SEE SPECIFIC NODE DEVICE REQUIREMENTS
- MECHANICAL SERVICE**
- CONTACT PRICE SALES REPRESENTATIVE
- CONTROLS**
- CONTROLS BY OTHERS
- ASSEMBLY AND INSTALLATION**
- ALL COMPONENTS SHOWN ARE FACTORY ASSEMBLED BY PARC UNLESS OTHERWISE NOTED
 - ALL INSTALLATION BY OTHERS AND METHODS SHOWN ARE NOTIONAL
 - (ASSY BY OTHERS); PROVIDED BY PARC, FIELD ASSEMBLED BY OTHERS
 - (BY OTHERS); PROVIDED AND FIELD ASSEMBLED BY OTHERS
- NOTES:**
- DIMENSIONS SHOWN IN PARENTHESES ARE FOR REFERENCE ONLY (X.XX)
 - METRIC DIMENSIONS SHOWN IN BRACKETS [X.XX]
 - PRODUCT FINISH MAY VARY IN TONE, GLOSS AND TEXTURE; VARIATIONS ARE WITHIN PARC QUALITY STANDARDS
 - TBC: DETAILS TO BE CONFIRMED
 - REFERENCE SUBMITTAL 272380 FOR PLENUM DETAILS
 - FLUSH CHANNEL WEIGHT = 2.3 KG / LIN. M
 - FLUSH CHANNEL WITH DIFFUSER WEIGHT = 4.1 KG / LIN. M
 - RECESSED CHANNEL WITH DIFFUSER WEIGHT = 2.6 KG / LIN. M

G	2022-02-08	JAC	MLH
F	2021-09-19	NLD	JAC
E	2021-03-19	NPT	MLH
D	2020-05-27	NPT	MLH
C	2020-03-25	NPT	MLH
B	2020-03-12	NPT	MLH
A	2019-11-27	NPT	MLH
REV	DATE	DRAWN BY	CHECKED BY

ALL DIMENSIONS IN INCHES UNLESS OTHERWISE SPECIFIED

TOLERANCES UNLESS OTHERWISE SPECIFIED			
LINEAR	X.X ± .06	X.XX ± .03	X.XXX ± .01 INCHES
ANGULAR	X ± 1	X.X ± .5	X.XX ± .25 DEGREES

PROJECT

DRAWING TITLE

NODE CHANNEL

SUBMITTAL NUMBER	271710	SHEET 2 OF 9	SIZE B
© COPYRIGHT PRICE INDUSTRIES 2020			

FLUSH CHANNEL - PUSH LATCH/MAGENT MOUNTING

PARC

A Price Company

WEBSITE: WWW.PARC-CEILINGS.COM

CONSTRUCTION:

- FLUSH CHANNEL
 - o ALUMINUM EXTRUSION
 - o ALUMINUM SHEET
 - o STEEL SHEET
- RECESSED CHANNEL
 - o ALUMINUM EXTRUSION
 - o ALUMINUM SHEET
 - o STEEL SHEET

FINISH:

- SIGHT BLOCK – BLACK
- END CAP SCREWS – MATCH CHANNEL FINISH
- ALL HARDWARE; MILL FINISH UNLESS OTHERWISE SPECIFIED

ELECTRICAL SERVICE

- SEE SPECIFIC NODE DEVICE REQUIREMENTS

MECHANICAL SERVICE

- CONTACT PRICE SALES REPRESENTATIVE

CONTROLS

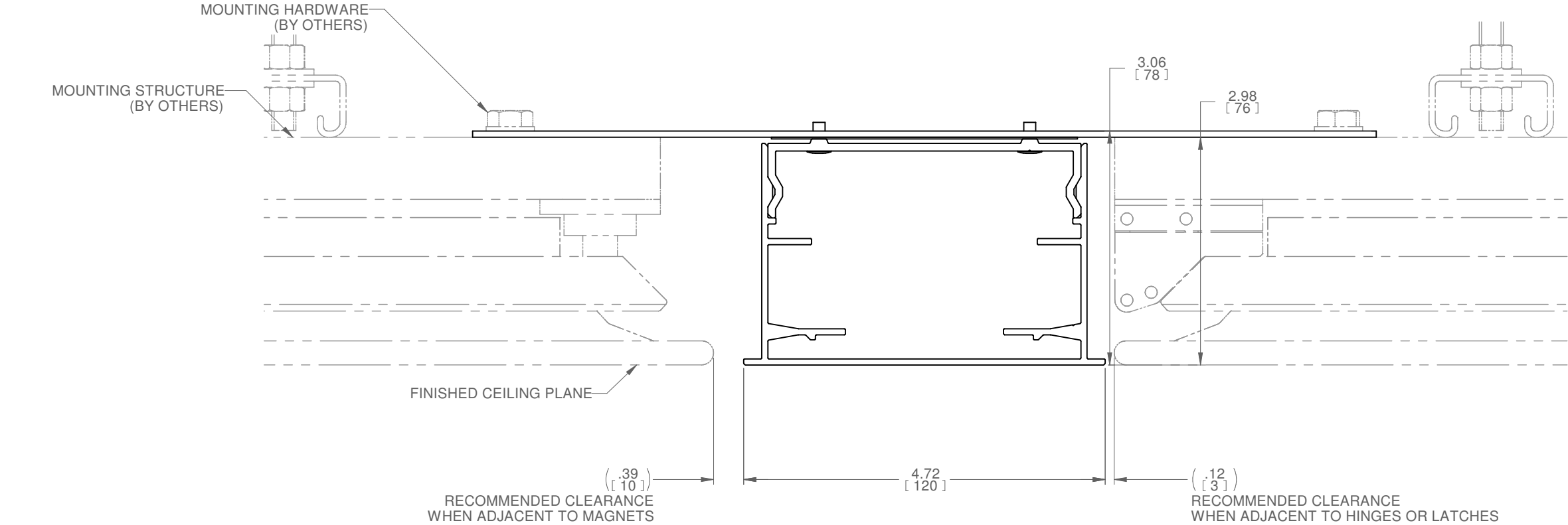
- CONTROLS BY OTHERS

ASSEMBLY AND INSTALLATION

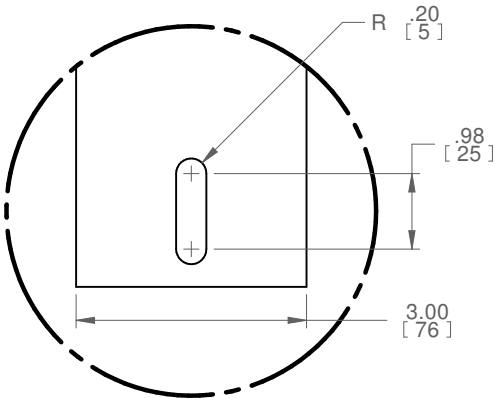
- ALL COMPONENTS SHOWN ARE FACTORY ASSEMBLED BY PARC UNLESS OTHERWISE NOTED
- ALL INSTALLATION BY OTHERS AND METHODS SHOWN ARE NOTIONAL
- (ASSY BY OTHERS); PROVIDED BY PARC, FIELD ASSEMBLED BY OTHERS
- (BY OTHERS); PROVIDED AND FIELD ASSEMBLED BY OTHERS

NOTES:

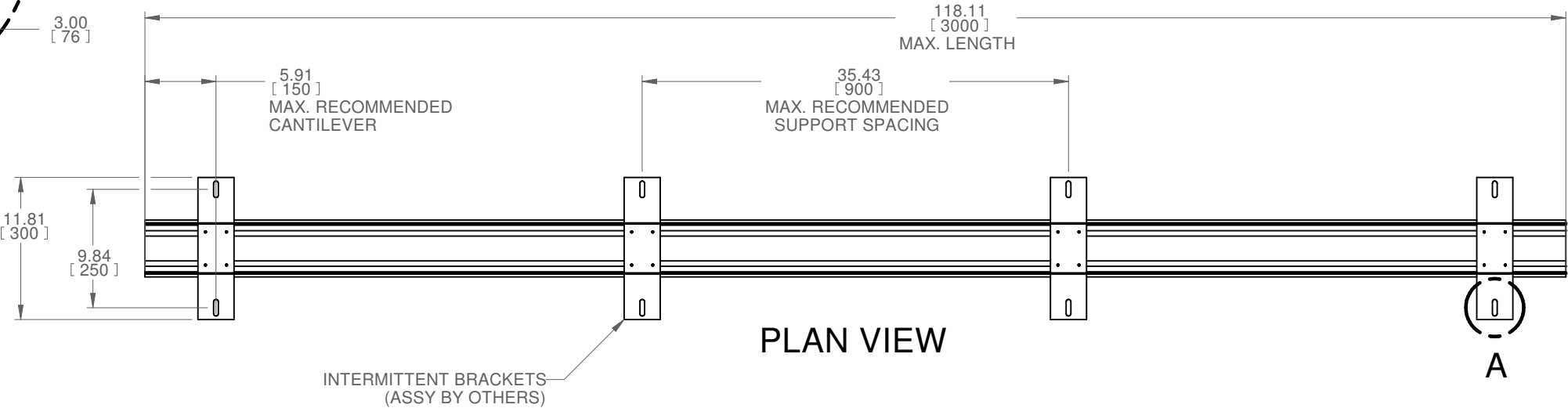
- DIMENSIONS SHOWN IN PARENTHESES ARE FOR REFERENCE ONLY (X.XX)
- METRIC DIMENSIONS SHOWN IN BRACKETS [X.XX]
- PRODUCT FINISH MAY VARY IN TONE, GLOSS AND TEXTURE; VARIATIONS ARE WITHIN PARC QUALITY STANDARDS
- TBC: DETAILS TO BE CONFIRMED
- REFERENCE SUBMITTAL 272380 FOR PLENUM DETAILS
- FLUSH CHANNEL WEIGHT = 2.3 KG / LIN. M
- FLUSH CHANNEL WITH DIFFUSER WEIGHT = 4.1 KG / LIN. M
- RECESSED CHANNEL WITH DIFFUSER WEIGHT = 2.6 KG / LIN. M



ELEVATION VIEW



DETAIL A



PLAN VIEW

G	2022-02-08	JAC	MLH
F	2021-09-19	NLD	JAC
E	2021-03-19	NPT	MLH
D	2020-05-27	NPT	MLH
C	2020-03-25	NPT	MLH
B	2020-03-12	NPT	MLH
A	2019-11-27	NPT	MLH

REV	DATE	DRAWN BY	CHECKED BY
-----	------	----------	------------

ALL DIMENSIONS IN INCHES UNLESS OTHERWISE SPECIFIED

TOLERANCES UNLESS OTHERWISE SPECIFIED			
LINEAR	X.X ± .06	X.XX ± .03	X.XXX ± .01 INCHES
ANGULAR	X ± 1	X.X ± .5	X.XX ± .25 DEGREES

PROJECT

DRAWING TITLE

NODE CHANNEL

SUBMITTAL NUMBER	271710	SHEET 3 OF 9	SIZE B
------------------	--------	--------------	--------

FLUSH CHANNEL WITH DIFFUSER - CORE MOUNTING

PARC

A Price Company

WEBSITE: WWW.PARC-CEILINGS.COM

CONSTRUCTION:

- FLUSH CHANNEL

- ALUMINUM EXTRUSION
- ALUMINUM SHEET
- STEEL SHEET

- RECESSED CHANNEL

- ALUMINUM EXTRUSION
- ALUMINUM SHEET
- STEEL SHEET

FINISH:

- SIGHT BLOCK – BLACK

- END CAP SCREWS – MATCH CHANNEL FINISH

- ALL HARDWARE; MILL FINISH UNLESS OTHERWISE SPECIFIED

ELECTRICAL SERVICE

- SEE SPECIFIC NODE DEVICE REQUIREMENTS

MECHANICAL SERVICE

- CONTACT PRICE SALES REPRESENTATIVE

CONTROLS

- CONTROLS BY OTHERS

ASSEMBLY AND INSTALLATION

- ALL COMPONENTS SHOWN ARE FACTORY ASSEMBLED BY PARC UNLESS OTHERWISE NOTED

- ALL INSTALLATION BY OTHERS AND METHODS SHOWN ARE NOTIONAL

- (ASSY BY OTHERS); PROVIDED BY PARC, FIELD ASSEMBLED BY OTHERS

- (BY OTHERS); PROVIDED AND FIELD ASSEMBLED BY OTHERS

NOTES:

- DIMENSIONS SHOWN IN PARENTHESES ARE FOR REFERENCE ONLY (X.XX)

- METRIC DIMENSIONS SHOWN IN BRACKETS [X.XX]

- PRODUCT FINISH MAY VARY IN TONE, GLOSS AND TEXTURE; VARIATIONS ARE WITHIN PARC QUALITY STANDARDS

- TBC: DETAILS TO BE CONFIRMED

- REFERENCE SUBMITTAL 272380 FOR PLENUM DETAILS

- FLUSH CHANNEL WEIGHT = 2.3 KG / LIN. M

- FLUSH CHANNEL WITH DIFFUSER WEIGHT = 4.1 KG / LIN. M

- RECESSED CHANNEL WITH DIFFUSER WEIGHT = 2.6 KG / LIN. M

G	2022-02-08	JAC	MLH
F	2021-09-19	NLD	JAC
E	2021-03-19	NPT	MLH
D	2020-05-27	NPT	MLH
C	2020-03-25	NPT	MLH
B	2020-03-12	NPT	MLH
A	2019-11-27	NPT	MLH
REV	DATE	DRAWN BY	CHECKED BY
		ALL DIMENSIONS IN INCHES UNLESS OTHERWISE SPECIFIED	
TOLERANCES UNLESS OTHERWISE SPECIFIED			
LINEAR	X.X ± .06	X.XX ± .03	X.XXX ± .01 INCHES
ANGULAR	X ± 1	X.X ± .5	X.XX ± .25 DEGREES
PROJECT			
DRAWING TITLE			
NODE CHANNEL			
SUBMITTAL NUMBER	271710	SHEET 4 OF 9	SIZE B
© COPYRIGHT PRICE INDUSTRIES 2020			

PLENUM
(ORDERED SEPARATELY)
(ASSY BY OTHERS)

6.51
[165]

3.94
[100]

4.72
[120]

.13
[3]
RECOMMENDED CLEARANCE

ELEVATION VIEW

118.11
[3000]
MAX. LENGTH

PLENUM CAN BE MOVED ALONG
THE LENGTH OF THE CHANNEL

5.91
[150]
MAX. RECOMMENDED
CANTILEVER

PLAN VIEW

BRIDGE BRACKETS ADJUSTABLE ALONG LENGTH OF CHANNEL.
NOT PERMITTED IN SAME LOCATION AS THE PLENUM
(ASSY BY OTHERS)

FLUSH CHANNEL WITH DIFFUSER - PUSH LATCH/MAGNET MOUNTING

PARC

A Price Company

WEBSITE: WWW.PARC-CEILINGS.COM

CONSTRUCTION:

- FLUSH CHANNEL
 - o ALUMINUM EXTRUSION
 - o ALUMINUM SHEET
 - o STEEL SHEET
- RECESSED CHANNEL
 - o ALUMINUM EXTRUSION
 - o ALUMINUM SHEET
 - o STEEL SHEET

FINISH:

- SIGHT BLOCK – BLACK
- END CAP SCREWS – MATCH CHANNEL FINISH
- ALL HARDWARE; MILL FINISH UNLESS OTHERWISE SPECIFIED

ELECTRICAL SERVICE

- SEE SPECIFIC NODE DEVICE REQUIREMENTS

MECHANICAL SERVICE

- CONTACT PRICE SALES REPRESENTATIVE

CONTROLS

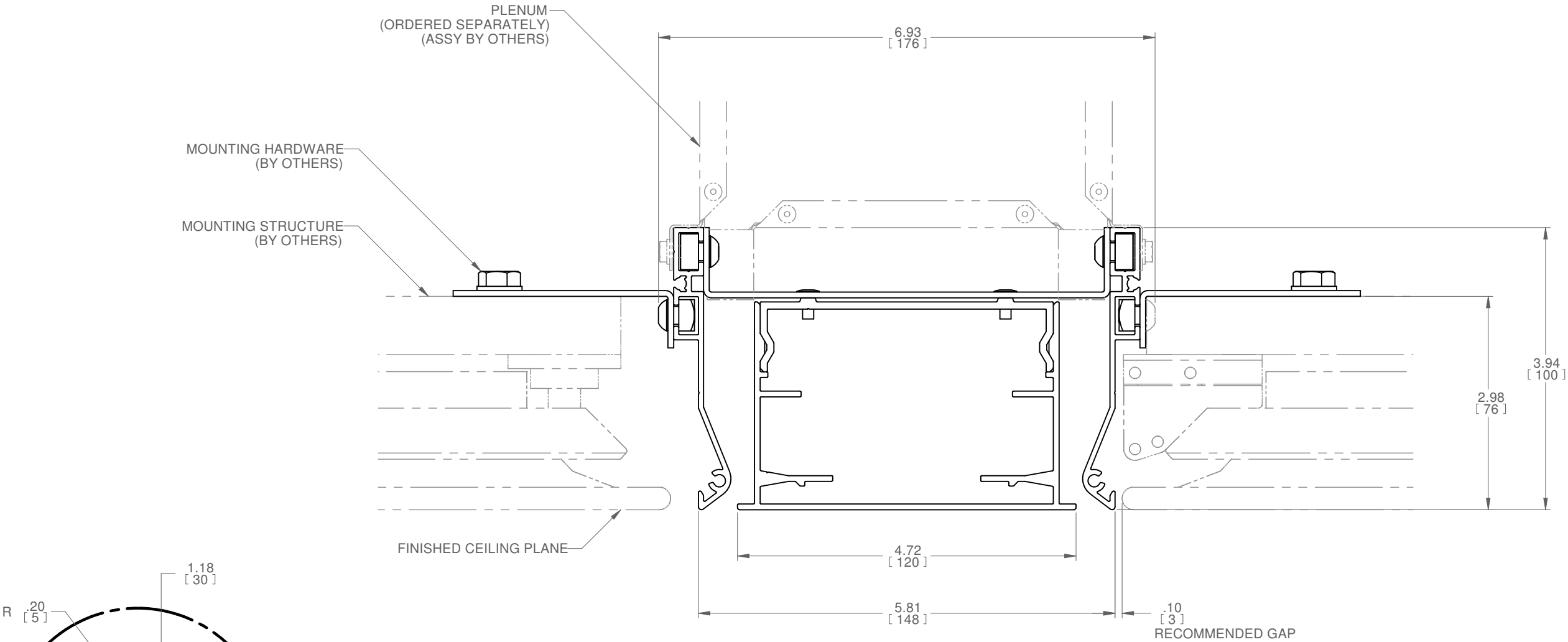
- CONTROLS BY OTHERS

ASSEMBLY AND INSTALLATION

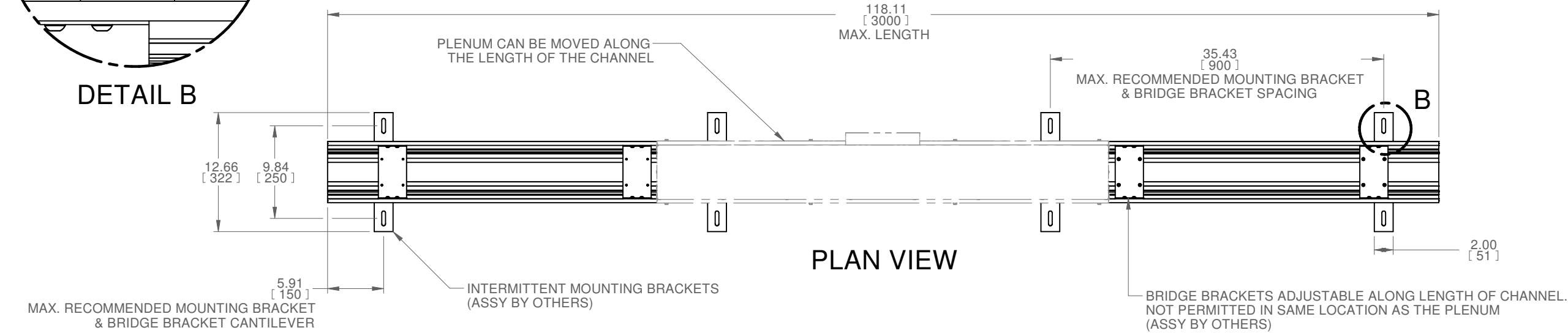
- ALL COMPONENTS SHOWN ARE FACTORY ASSEMBLED BY PARC UNLESS OTHERWISE NOTED
- ALL INSTALLATION BY OTHERS AND METHODS SHOWN ARE NOTIONAL
- (ASSY BY OTHERS); PROVIDED BY PARC, FIELD ASSEMBLED BY OTHERS
- (BY OTHERS); PROVIDED AND FIELD ASSEMBLED BY OTHERS

NOTES:

- DIMENSIONS SHOWN IN PARENTHESES ARE FOR REFERENCE ONLY (X.XX)
- METRIC DIMENSIONS SHOWN IN BRACKETS [X.XX]
- PRODUCT FINISH MAY VARY IN TONE, GLOSS AND TEXTURE; VARIATIONS ARE WITHIN PARC QUALITY STANDARDS
- TBC: DETAILS TO BE CONFIRMED
- REFERENCE SUBMITTAL 272380 FOR PLENUM DETAILS
- FLUSH CHANNEL WEIGHT = 2.3 KG / LIN. M
- FLUSH CHANNEL WITH DIFFUSER WEIGHT = 4.1 KG / LIN. M
- RECESSED CHANNEL WITH DIFFUSER WEIGHT = 2.6 KG / LIN. M



ELEVATION VIEW



PLAN VIEW

G	2022-02-08	JAC	MLH
F	2021-09-19	NLD	JAC
E	2021-03-19	NPT	MLH
D	2020-05-27	NPT	MLH
C	2020-03-25	NPT	MLH
B	2020-03-12	NPT	MLH
A	2019-11-27	NPT	MLH
REV	DATE	DRAWN BY	CHECKED BY

ALL DIMENSIONS IN INCHES UNLESS OTHERWISE SPECIFIED

TOLERANCES UNLESS OTHERWISE SPECIFIED			
LINEAR	X.X ± .06	X.XX ± .03	X.XXX ± .01 INCHES
ANGULAR	X ± 1	X.X ± .5	X.XX ± .25 DEGREES

PROJECT

DRAWING TITLE

NODE CHANNEL

SUBMITTAL NUMBER	271710	SHEET 5 OF 9	SIZE B
© COPYRIGHT PRICE INDUSTRIES 2020			

RECESSED CHANNEL WITH DIFFUSER - CORE MOUNTING

PARC

A Price Company

WEBSITE: WWW.PARC-CEILINGS.COM

CONSTRUCTION:

- FLUSH CHANNEL
 - o ALUMINUM EXTRUSION
 - o ALUMINUM SHEET
 - o STEEL SHEET
- RECESSED CHANNEL
 - o ALUMINUM EXTRUSION
 - o ALUMINUM SHEET
 - o STEEL SHEET

FINISH:

- SIGHT BLOCK – BLACK
- END CAP SCREWS – MATCH CHANNEL FINISH
- ALL HARDWARE; MILL FINISH UNLESS OTHERWISE SPECIFIED

ELECTRICAL SERVICE

- SEE SPECIFIC NODE DEVICE REQUIREMENTS

MECHANICAL SERVICE

- CONTACT PRICE SALES REPRESENTATIVE

CONTROLS

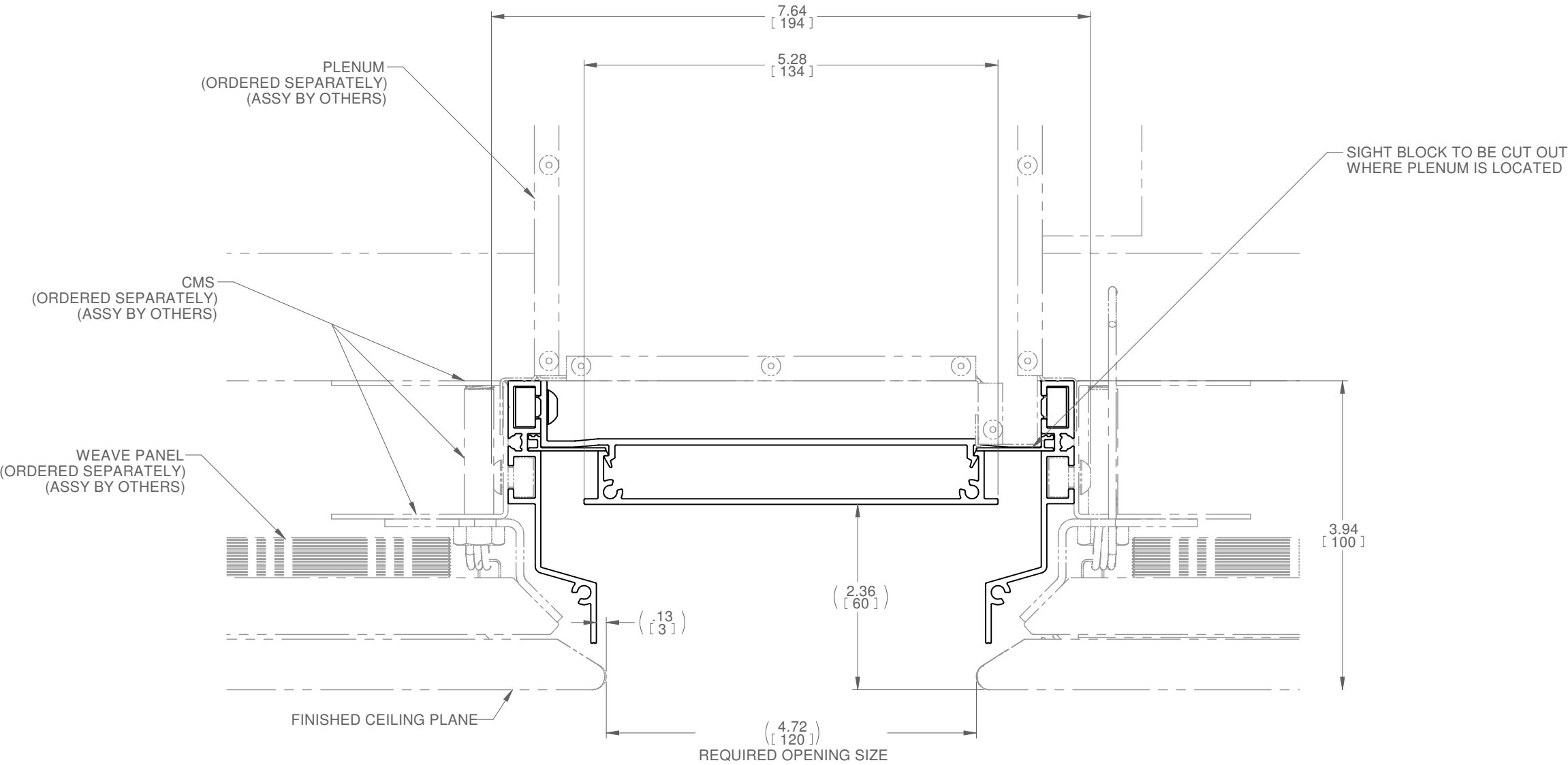
- CONTROLS BY OTHERS

ASSEMBLY AND INSTALLATION

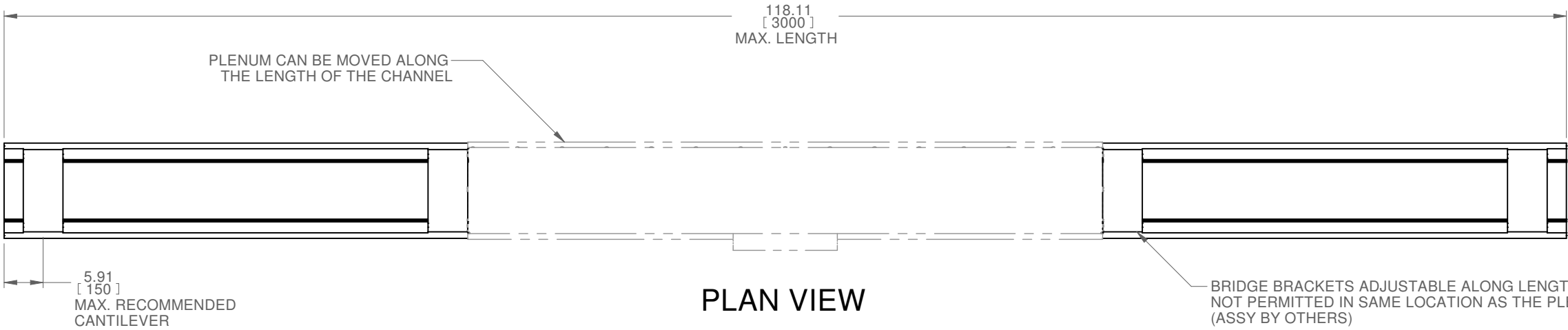
- ALL COMPONENTS SHOWN ARE FACTORY ASSEMBLED BY PARC UNLESS OTHERWISE NOTED
- ALL INSTALLATION BY OTHERS AND METHODS SHOWN ARE NOTIONAL
- (ASSY BY OTHERS); PROVIDED BY PARC, FIELD ASSEMBLED BY OTHERS
- (BY OTHERS); PROVIDED AND FIELD ASSEMBLED BY OTHERS

NOTES:

- DIMENSIONS SHOWN IN PARENTHESES ARE FOR REFERENCE ONLY (X.XX)
- METRIC DIMENSIONS SHOWN IN BRACKETS [X.XX]
- PRODUCT FINISH MAY VARY IN TONE, GLOSS AND TEXTURE; VARIATIONS ARE WITHIN PARC QUALITY STANDARDS
- TBC: DETAILS TO BE CONFIRMED
- REFERENCE SUBMITTAL 272380 FOR PLENUM DETAILS
- FLUSH CHANNEL WEIGHT = 2.3 KG / LIN. M
- FLUSH CHANNEL WITH DIFFUSER WEIGHT = 4.1 KG / LIN. M
- RECESSED CHANNEL WITH DIFFUSER WEIGHT = 2.6 KG / LIN. M



ELEVATION VIEW



PLAN VIEW

G	2022-02-08	JAC	MLH
F	2021-09-19	NLD	JAC
E	2021-03-19	NPT	MLH
D	2020-05-27	NPT	MLH
C	2020-03-25	NPT	MLH
B	2020-03-12	NPT	MLH
A	2019-11-27	NPT	MLH
REV	DATE	DRAWN BY	CHECKED BY

ALL DIMENSIONS IN INCHES UNLESS OTHERWISE SPECIFIED

TOLERANCES UNLESS OTHERWISE SPECIFIED			
LINEAR	X.X ± .06	X.XX ± .03	X.XXX ± .01 INCHES
ANGULAR	X ± 1	X.X ± .5	X.XX ± .25 DEGREES

PROJECT

DRAWING TITLE
NODE CHANNEL

SUBMITTAL NUMBER	271710	SHEET 6 OF 9	SIZE B
© COPYRIGHT PRICE INDUSTRIES 2020			

RECESSED CHANNEL WITH DIFFUSER - PUSH LATCH/MAGNET MOUNTING

PARC

A Price Company

WEBSITE: WWW.PARC-CEILINGS.COM

CONSTRUCTION:

- FLUSH CHANNEL
 - o ALUMINUM EXTRUSION
 - o ALUMINUM SHEET
 - o STEEL SHEET
- RECESSED CHANNEL
 - o ALUMINUM EXTRUSION
 - o ALUMINUM SHEET
 - o STEEL SHEET

FINISH:

- SIGHT BLOCK – BLACK
- END CAP SCREWS – MATCH CHANNEL FINISH
- ALL HARDWARE; MILL FINISH UNLESS OTHERWISE SPECIFIED

ELECTRICAL SERVICE

- SEE SPECIFIC NODE DEVICE REQUIREMENTS

MECHANICAL SERVICE

- CONTACT PRICE SALES REPRESENTATIVE

CONTROLS

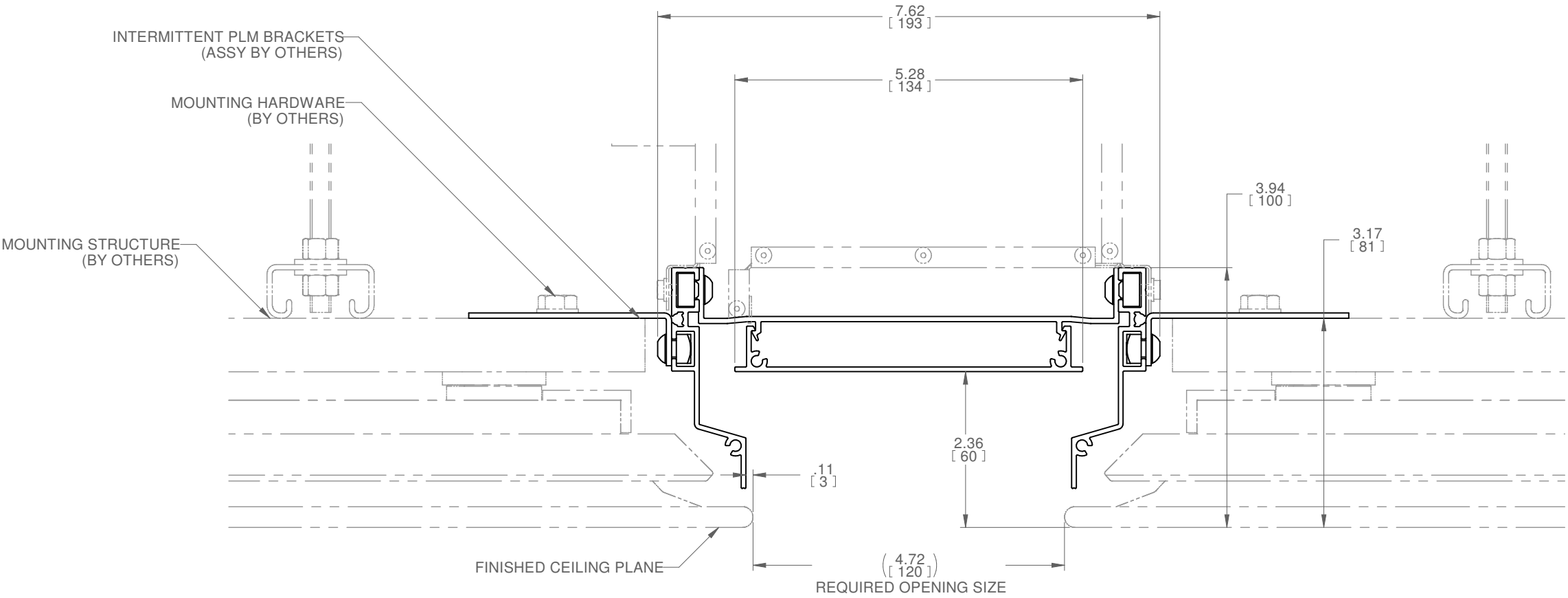
- CONTROLS BY OTHERS

ASSEMBLY AND INSTALLATION

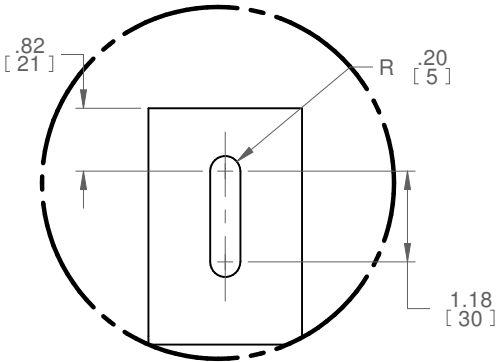
- ALL COMPONENTS SHOWN ARE FACTORY ASSEMBLED BY PARC UNLESS OTHERWISE NOTED
- ALL INSTALLATION BY OTHERS AND METHODS SHOWN ARE NOTIONAL
- (ASSY BY OTHERS); PROVIDED BY PARC, FIELD ASSEMBLED BY OTHERS
- (BY OTHERS); PROVIDED AND FIELD ASSEMBLED BY OTHERS

NOTES:

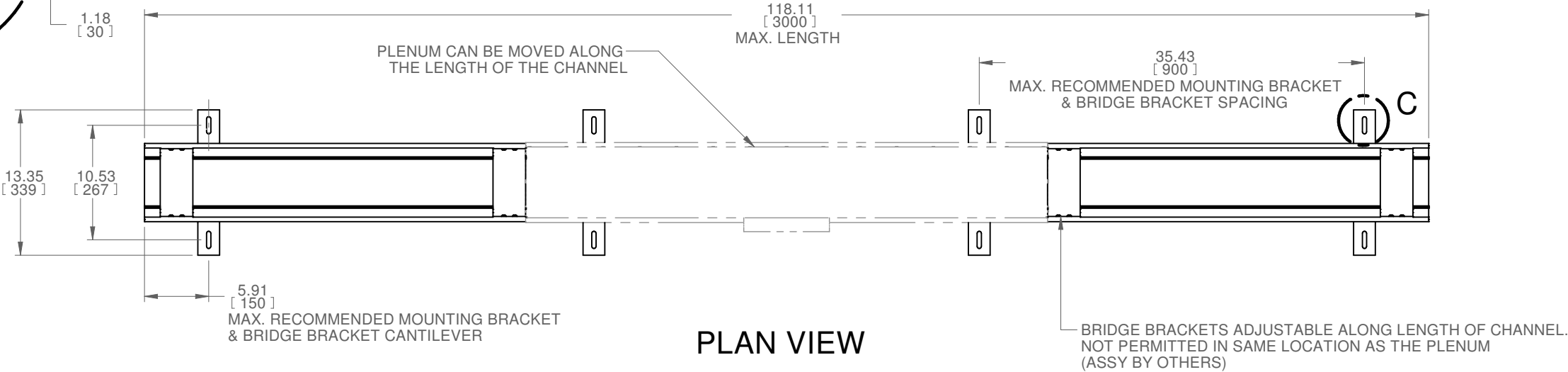
- DIMENSIONS SHOWN IN PARENTHESES ARE FOR REFERENCE ONLY (X.XX)
- METRIC DIMENSIONS SHOWN IN BRACKETS [X.XX]
- PRODUCT FINISH MAY VARY IN TONE, GLOSS AND TEXTURE; VARIATIONS ARE WITHIN PARC QUALITY STANDARDS
- TBC: DETAILS TO BE CONFIRMED
- REFERENCE SUBMITTAL 272380 FOR PLENUM DETAILS
- FLUSH CHANNEL WEIGHT = 2.3 KG / LIN. M
- FLUSH CHANNEL WITH DIFFUSER WEIGHT = 4.1 KG / LIN. M
- RECESSED CHANNEL WITH DIFFUSER WEIGHT = 2.6 KG / LIN. M



ELEVATION VIEW



DETAIL C



PLAN VIEW

G	2022-02-08	JAC	MLH
F	2021-09-19	NLD	JAC
E	2021-03-19	NPT	MLH
D	2020-05-27	NPT	MLH
C	2020-03-25	NPT	MLH
B	2020-03-12	NPT	MLH
A	2019-11-27	NPT	MLH
REV	DATE	DRAWN BY	CHECKED BY

ALL DIMENSIONS IN INCHES UNLESS OTHERWISE SPECIFIED

TOLERANCES UNLESS OTHERWISE SPECIFIED			
LINEAR	X.X ± .06	X.XX ± .03	X.XXX ± .01 INCHES
ANGULAR	X ± 1	X.X ± .5	X.XX ± .25 DEGREES

PROJECT

DRAWING TITLE

NODE CHANNEL

SUBMITTAL NUMBER	271710	SHEET 7 OF 9	SIZE B
© COPYRIGHT PRICE INDUSTRIES 2020			

RECESSED CHANNEL WITH DIFFUSER - TRIMLESS

PARC

A Price Company

WEBSITE: WWW.PARC-CEILINGS.COM

CONSTRUCTION:

- FLUSH CHANNEL
- o

ALUMINUM EXTRUSION
- o

ALUMINUM SHEET
- o

STEEL SHEET
- RECESSED CHANNEL
- o

ALUMINUM EXTRUSION
- o

ALUMINUM SHEET
- o

STEEL SHEET

FINISH:

- SIGHT BLOCK – BLACK
- END CAP SCREWS – MATCH CHANNEL FINISH
- ALL HARDWARE; MILL FINISH UNLESS OTHERWISE SPECIFIED

ELECTRICAL SERVICE

- SEE SPECIFIC NODE DEVICE REQUIREMENTS

MECHANICAL SERVICE

- CONTACT PRICE SALES REPRESENTATIVE

CONTROLS

- CONTROLS BY OTHERS

ASSEMBLY AND INSTALLATION

- ALL COMPONENTS SHOWN ARE FACTORY ASSEMBLED BY PARC UNLESS OTHERWISE NOTED
- ALL INSTALLATION BY OTHERS AND METHODS SHOWN ARE NOTIONAL
- (ASSY BY OTHERS); PROVIDED BY PARC, FIELD ASSEMBLED BY OTHERS
- (BY OTHERS); PROVIDED AND FIELD ASSEMBLED BY OTHERS

NOTES:

- DIMENSIONS SHOWN IN PARENTHESES ARE FOR REFERENCE ONLY (X.XX)
- METRIC DIMENSIONS SHOWN IN BRACKETS [X.XX]
- PRODUCT FINISH MAY VARY IN TONE, GLOSS AND TEXTURE; VARIATIONS ARE WITHIN PARC QUALITY STANDARDS
- TBC: DETAILS TO BE CONFIRMED
- REFERENCE SUBMITTAL 272380 FOR PLENUM DETAILS
- FLUSH CHANNEL WEIGHT = 2.3 KG / LIN. M
- FLUSH CHANNEL WITH DIFFUSER WEIGHT = 4.1 KG / LIN. M
- RECESSED CHANNEL WITH DIFFUSER WEIGHT = 2.6 KG / LIN. M

G	2022-02-08	JAC	MLH
F	2021-09-19	NLD	JAC
E	2021-03-19	NPT	MLH
D	2020-05-27	NPT	MLH
C	2020-03-25	NPT	MLH
B	2020-03-12	NPT	MLH
A	2019-11-27	NPT	MLH
REV	DATE	DRAWN BY	CHECKED BY

ALL DIMENSIONS IN INCHES UNLESS OTHERWISE SPECIFIED

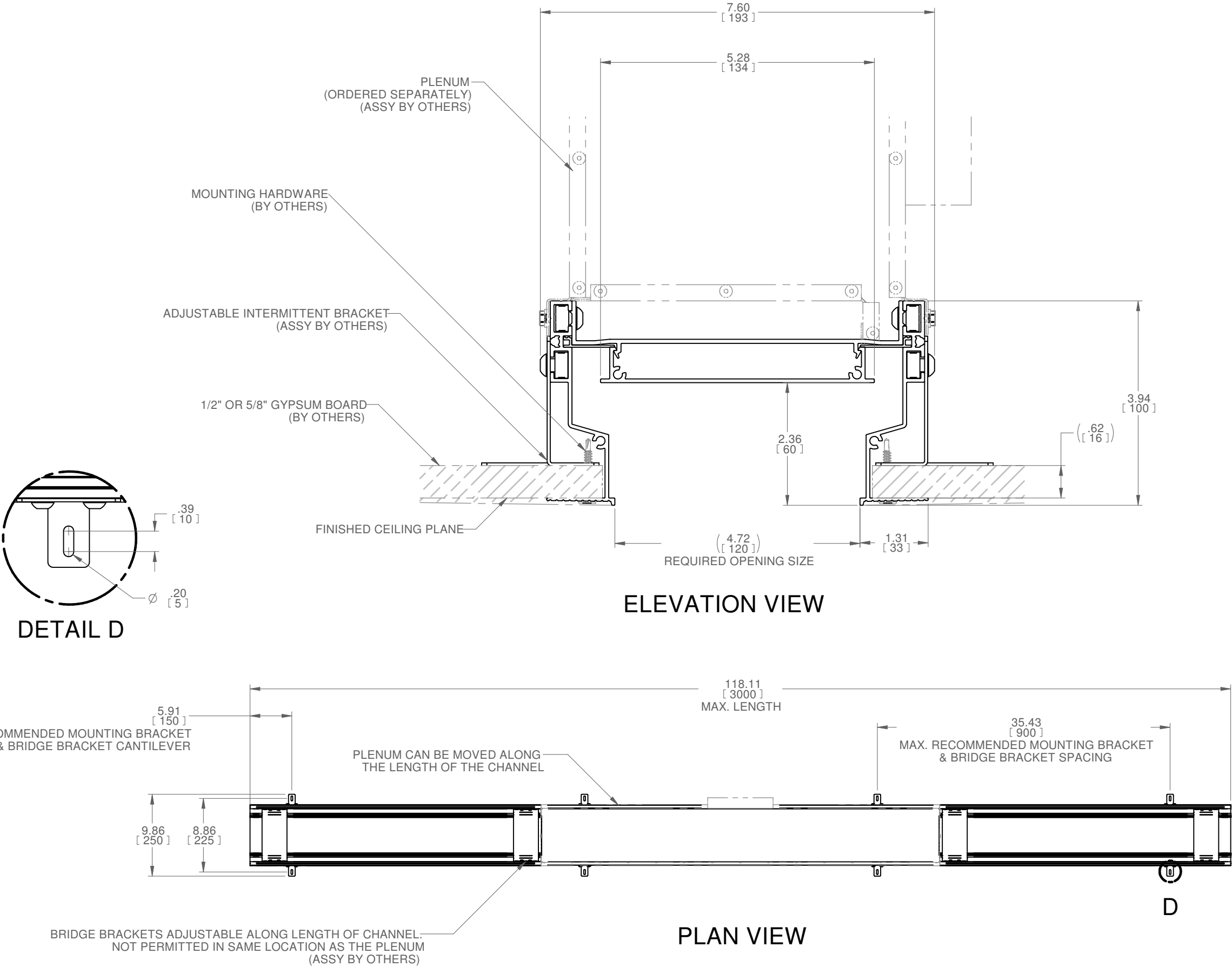
TOLERANCES UNLESS OTHERWISE SPECIFIED			
LINEAR	X.X ± .06	X.XX ± .03	X.XXX ± .01 INCHES
ANGULAR	X ± 1	X.X ± .5	X.XX ± .25 DEGREES

PROJECT

DRAWING TITLE

NODE CHANNEL

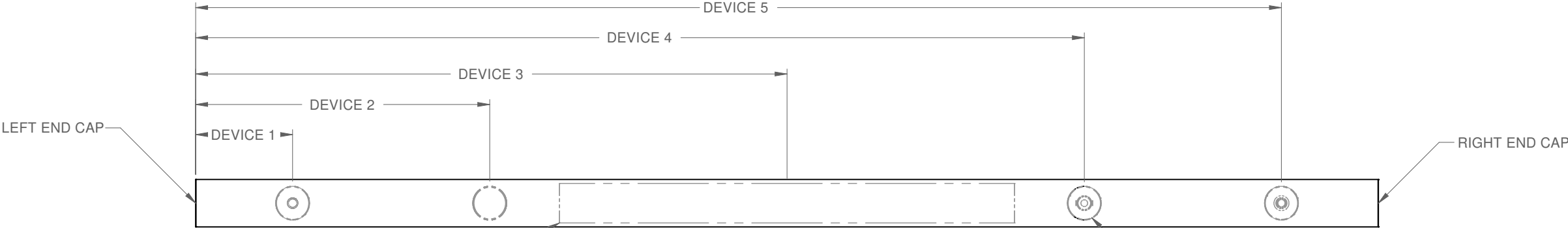
SUBMITTAL NUMBER	271710	SHEET 8 OF 9	SIZE B
© COPYRIGHT PRICE INDUSTRIES 2020			



A B C D E

DEVICES

1



NODE DEVICE & END CAP LAYOUT

REFLECTED CEILING PLAN

NOTES:

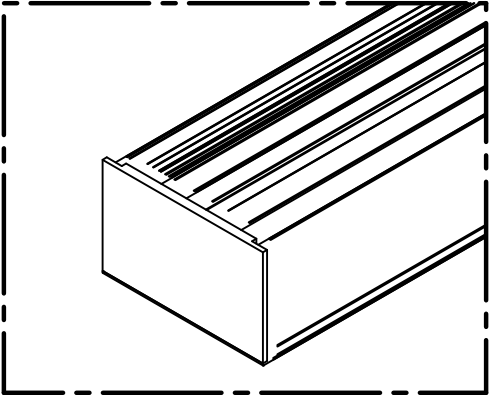
- 1
- CUTOUTS AND HOUSINGS PROVIDED. DEVICES ORDERED SEPARATELY
- 2
- MAXIMUM 5 DEVICES PER CHANNEL (FOR ADDITIONAL DEVICES, CONTACT YOUR SALES REPRESENTATIVE)
- 3
- MINIMUM DEVICE SPACING FROM END OF CHANNEL: 150MM EDGE TO EDGE
- 4
- TYPICAL MINIMUM SPACING BETWEEN DEVICES: 30MM EDGE TO EDGE
- 5
- DOWNLIGHT ON TRIMLESS RECESSED CHANNELS REQUIRE ACCESS PANELS FOR SERVICE / INSTALLATION (BY OTHERS)
- 6
- FOR THIRD PARTY DEVICE INTEGRATION PLEASE CONTACT YOUR SALES REPRESENTATIVE

5

BLANK NODE	1.77 [45]
CAMERA	1.77 [45]
DOWNLIGHT	1.77 [45]
EMERGENCY LIGHT	1.77 [45]
LINEAR LIGHT	22.72 [577]
ROSE NODE	1.77 [45]
SENSOR	1.77 [45]
SMOKE SAMPLING POINT	1.77 [45]
SPEAKER	5.31 [135]
SPOTLIGHT	1.77 [45]
SPRINKLER	1.77 [45]
AVAILABLE DEVICE TYPES	DEVICE C/L TO EDGE

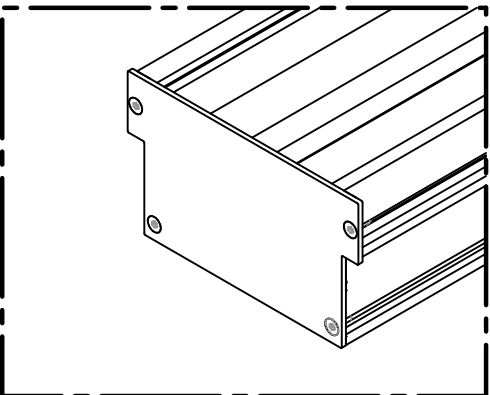
END CONDITIONS

3



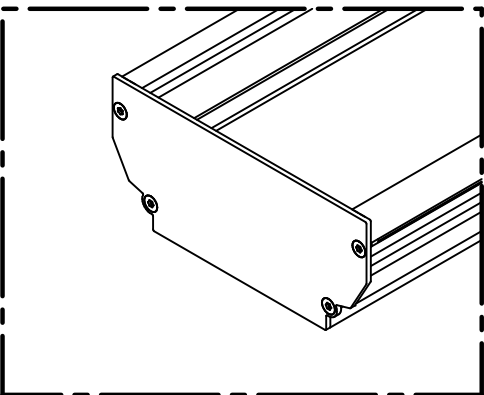
END CAP DETAIL VIEW

FLUSH CHANNEL



END CAP DETAIL VIEW

FLUSH CHANNEL WITH DIFFUSER



END CAP DETAIL VIEW

RECESSED CHANNEL

CONSTRUCTION:

- FLUSH CHANNEL
 - o ALUMINUM EXTRUSION
 - o ALUMINUM SHEET
 - o STEEL SHEET
- RECESSED CHANNEL
 - o ALUMINUM EXTRUSION
 - o ALUMINUM SHEET
 - o STEEL SHEET

FINISH:

- SIGHT BLOCK – BLACK
- END CAP SCREWS – MATCH CHANNEL FINISH
- ALL HARDWARE; MILL FINISH UNLESS OTHERWISE SPECIFIED

ELECTRICAL SERVICE

- SEE SPECIFIC NODE DEVICE REQUIREMENTS

MECHANICAL SERVICE

- CONTACT PRICE SALES REPRESENTATIVE

CONTROLS

- CONTROLS BY OTHERS

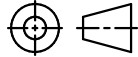
ASSEMBLY AND INSTALLATION

- ALL COMPONENTS SHOWN ARE FACTORY ASSEMBLED BY PARC UNLESS OTHERWISE NOTED
- ALL INSTALLATION BY OTHERS AND METHODS SHOWN ARE NOTIONAL
- (ASSY BY OTHERS); PROVIDED BY PARC, FIELD ASSEMBLED BY OTHERS
- (BY OTHERS); PROVIDED AND FIELD ASSEMBLED BY OTHERS

NOTES:

- DIMENSIONS SHOWN IN PARENTHESES ARE FOR REFERENCE ONLY (X.XX)
- METRIC DIMENSIONS SHOWN IN BRACKETS [X.XX]
- PRODUCT FINISH MAY VARY IN TONE, GLOSS AND TEXTURE; VARIATIONS ARE WITHIN PARC QUALITY STANDARDS
- TBC: DETAILS TO BE CONFIRMED
- REFERENCE SUBMITTAL 272380 FOR PLENUM DETAILS
- FLUSH CHANNEL WEIGHT = 2.3 KG / LIN. M
- FLUSH CHANNEL WITH DIFFUSER WEIGHT = 4.1 KG / LIN. M
- RECESSED CHANNEL WITH DIFFUSER WEIGHT = 2.6 KG / LIN. M

G	2022-02-08	JAC	MLH
F	2021-09-19	NLD	JAC
E	2021-03-19	NPT	MLH
D	2020-05-27	NPT	MLH
C	2020-03-25	NPT	MLH
B	2020-03-12	NPT	MLH
A	2019-11-27	NPT	MLH
REV	DATE	DRAWN BY	CHECKED BY



ALL DIMENSIONS IN INCHES UNLESS OTHERWISE SPECIFIED

TOLERANCES UNLESS OTHERWISE SPECIFIED			
LINEAR	X.X ± .06	X.XX ± .03	X.XXX ± .01 INCHES
ANGULAR	X ± 1	X.X ± .5	X.XX ± .25 DEGREES

PROJECT

DRAWING TITLE

NODE CHANNEL

SUBMITTAL NUMBER	271710	SHEET 9 OF 9	SIZE
------------------	--------	--------------	------

© COPYRIGHT PRICE INDUSTRIES 2020

B

A

B

C

D

E