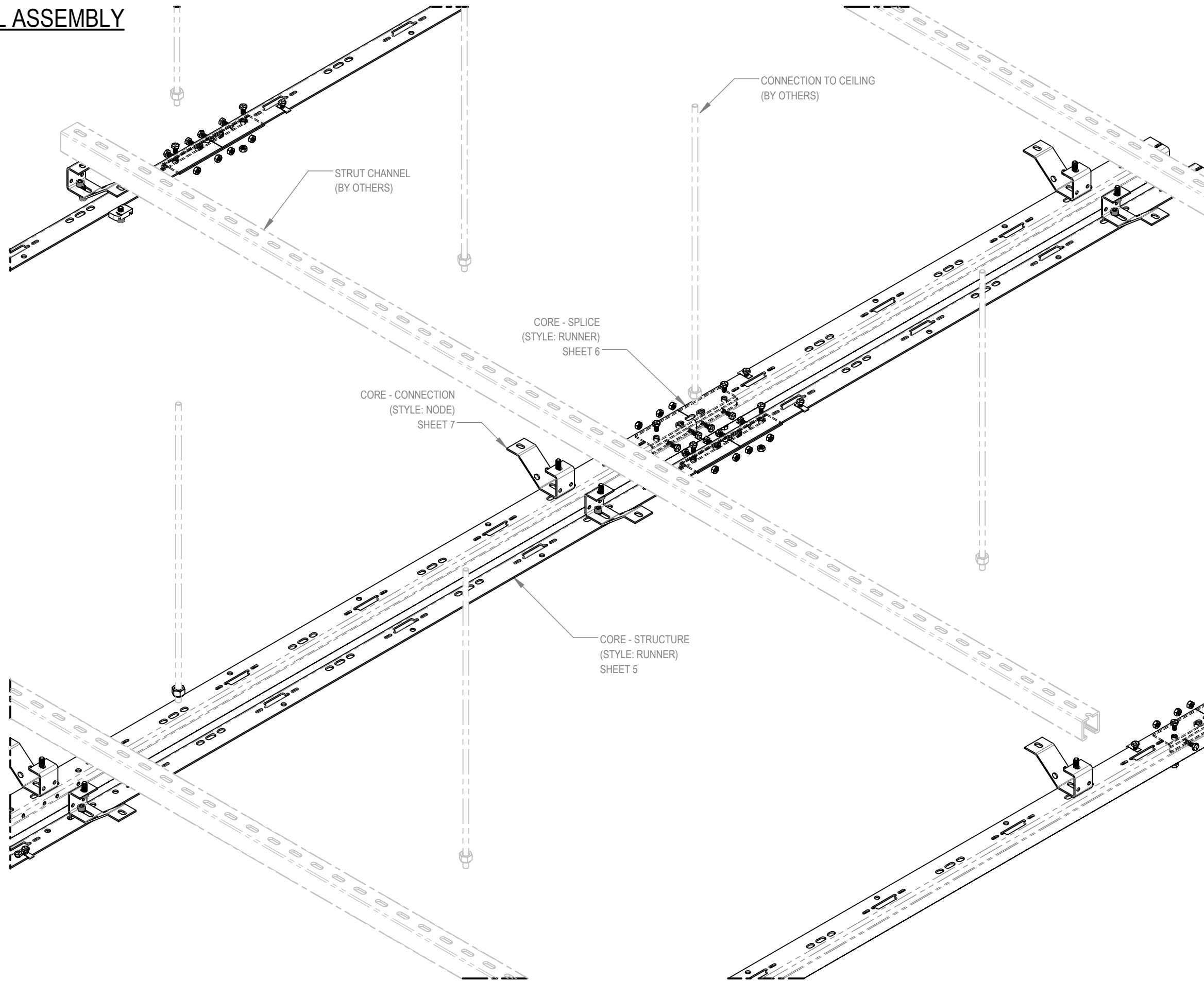


SUBMITTAL

GENERAL ASSEMBLY



EXPLODED VIEW

PARC
A Price Company
PARC-CEILINGS.COM

CONSTRUCTION:

- RUNNERS
 - o .110" [2.8MM] THICK STEEL SHEET
- SPLICE PLATE
 - o .110" [2.8MM] THICK STEEL SHEET
- NODE BRACKET
 - o .110" [2.8MM] THICK STEEL SHEET

FINISH:

- ALL HARDWARE: MILL FINISH UNLESS OTHERWISE SPECIFIED

ASSEMBLY AND INSTALLATION

- ALL COMPONENTS SHOWN ARE FACTORY ASSEMBLED BY PARC UNLESS OTHERWISE NOTED
- ALL INSTALLATION BY OTHERS AND METHODS SHOWN ARE NOTIONAL
- (ASSY BY OTHERS): PROVIDED BY PARC, FIELD ASSEMBLED BY OTHERS
- (BY OTHERS): PROVIDED AND FIELD ASSEMBLED BY OTHERS

NOTES:

- DIMENSIONS SHOWN IN PARENTHESES ARE FOR REFERENCE ONLY (X.XX)
- METRIC DIMENSIONS SHOWN IN BRACKETS [X.XX]
- PRODUCT FINISH MAY VARY IN TONE, GLOSS AND TEXTURE; VARIATIONS ARE WITHIN PARC QUALITY STANDARDS
- TBC: DETAILS TO BE CONFIRMED
- CORE MASS = 1.9 KG/LIN. M
- CORE MASS INCLUDES RUNNER, SPLICE, NODE BRACKET, AND HARDWARE

C	8/8/2023	MN	JAC
REV	DATE	DRAWN BY	CHECKED BY

ALL DIMENSIONS IN INCHES UNLESS OTHERWISE SPECIFIED

TOLERANCES UNLESS OTHERWISE SPECIFIED			
LINEAR	X.X ± .06	X.XX ± .03	X.XXX ± .01 INCHES
ANGULAR	X ± 1	X.X ± .5	X.XX ± .25 DEGREES

PROJECT
CORE

DRAWING TITLE
STANDARD METRIC SUBMITTAL

SUBMITTAL NUMBER	273901	SHEET 1 OF 8	SIZE B
------------------	---------------	--------------	---------------

© COPYRIGHT PRICE INDUSTRIES 2022

SUBMITTAL

GENERAL ASSEMBLY

PARC
A Price Company
PARC-CEILINGS.COM

CONSTRUCTION:

- RUNNERS
 - o .110" [2.8MM] THICK STEEL SHEET
- SPLICE PLATE
 - o .110" [2.8MM] THICK STEEL SHEET
- NODE BRACKET
 - o .110" [2.8MM] THICK STEEL SHEET

FINISH:

- ALL HARDWARE: MILL FINISH UNLESS OTHERWISE SPECIFIED

ASSEMBLY AND INSTALLATION

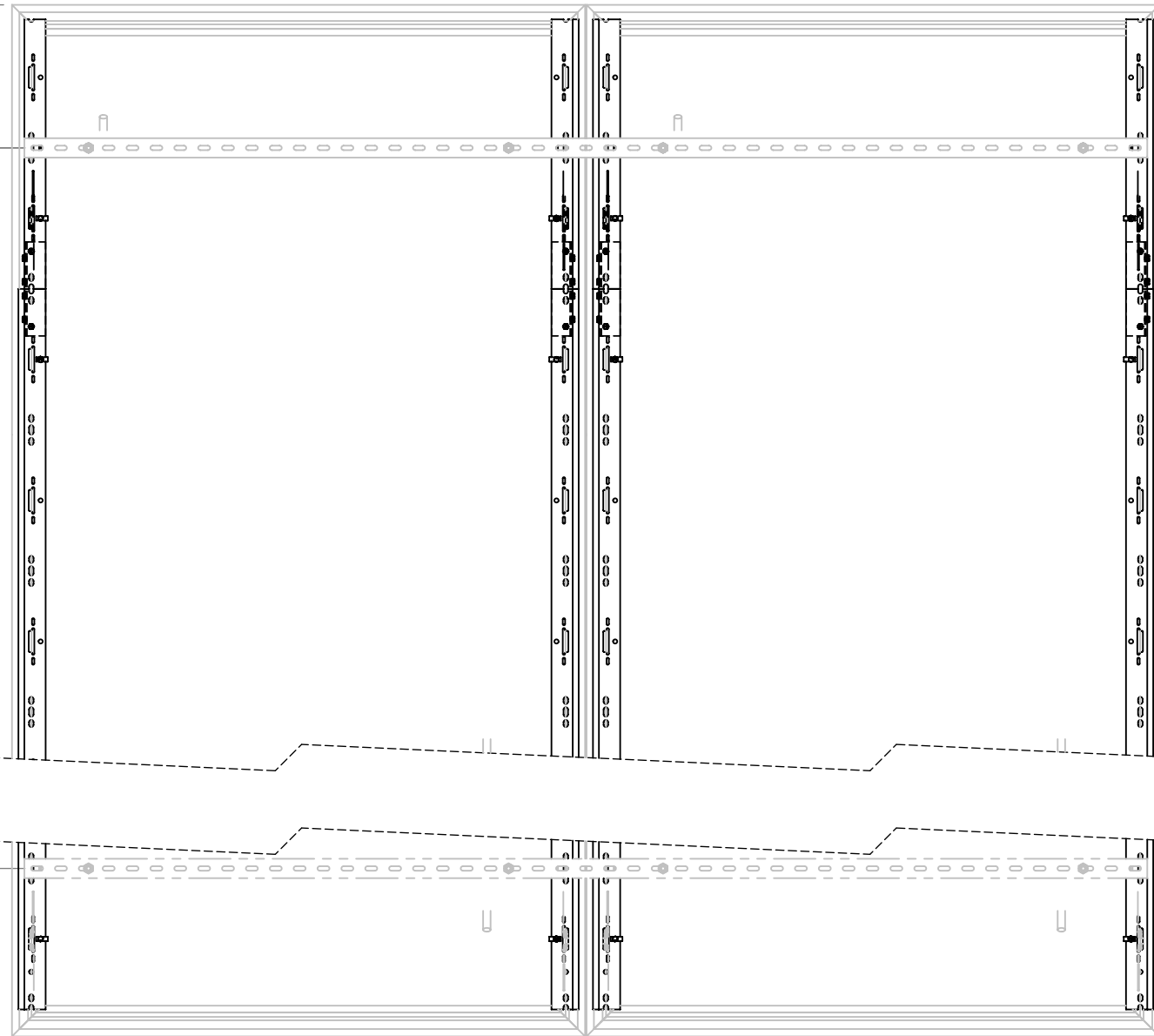
- ALL COMPONENTS SHOWN ARE FACTORY ASSEMBLED BY PARC UNLESS OTHERWISE NOTED
- ALL INSTALLATION BY OTHERS AND METHODS SHOWN ARE NOTIONAL
- (ASSY BY OTHERS): PROVIDED BY PARC, FIELD ASSEMBLED BY OTHERS
- (BY OTHERS): PROVIDED AND FIELD ASSEMBLED BY OTHERS

NOTES:

- DIMENSIONS SHOWN IN PARENTHESES ARE FOR REFERENCE ONLY (X.XX)
- METRIC DIMENSIONS SHOWN IN BRACKETS [X.XX]
- PRODUCT FINISH MAY VARY IN TONE, GLOSS AND TEXTURE; VARIATIONS ARE WITHIN PARC QUALITY STANDARDS
- TBC: DETAILS TO BE CONFIRMED
- CORE MASS = 1.9 KG/LIN. M
- CORE MASS INCLUDES RUNNER, SPLICE, NODE BRACKET, AND HARDWARE

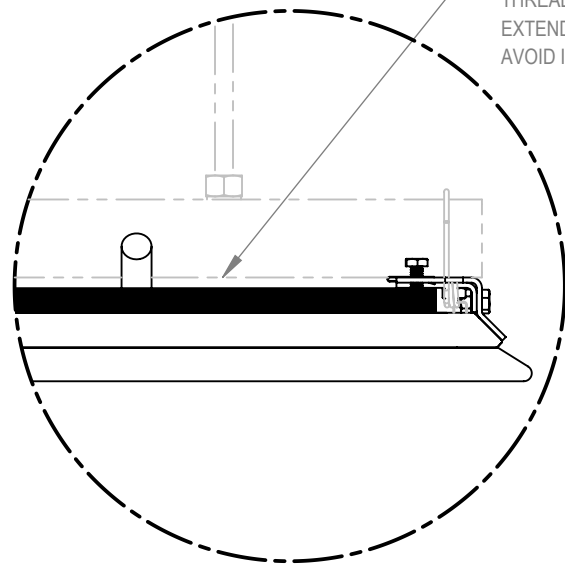
19.69
[500]
MAX. UNSUPPORTED RUNNER

59.06
[1500]
MAX. STRUT SPACING



TOP VIEW

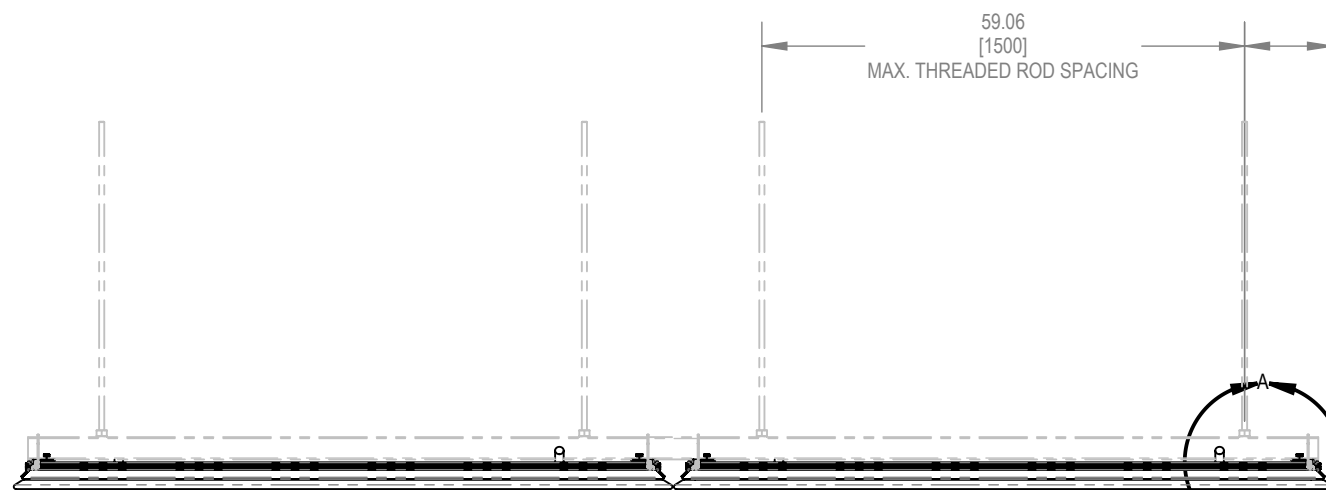
THREADED ROD NOT PERMITTED TO EXTEND PAST BOTTOM OF STRUT CHANNEL TO AVOID INTERFERENCE WITH PANEL



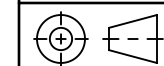
DETAIL A

59.06
[1500]
MAX. THREADED ROD SPACING

19.69
[500]
MAX. CANTILEVER



ELEVATION VIEW



ALL DIMENSIONS IN INCHES UNLESS OTHERWISE SPECIFIED

TOLERANCES UNLESS OTHERWISE SPECIFIED			
LINEAR	X.X ± .06	X.XX ± .03	X.XXX ± .01 INCHES
ANGULAR	X ± 1	X.X ± .5	X.XX ± .25 DEGREES

PROJECT
CORE

DRAWING TITLE
STANDARD METRIC SUBMITTAL

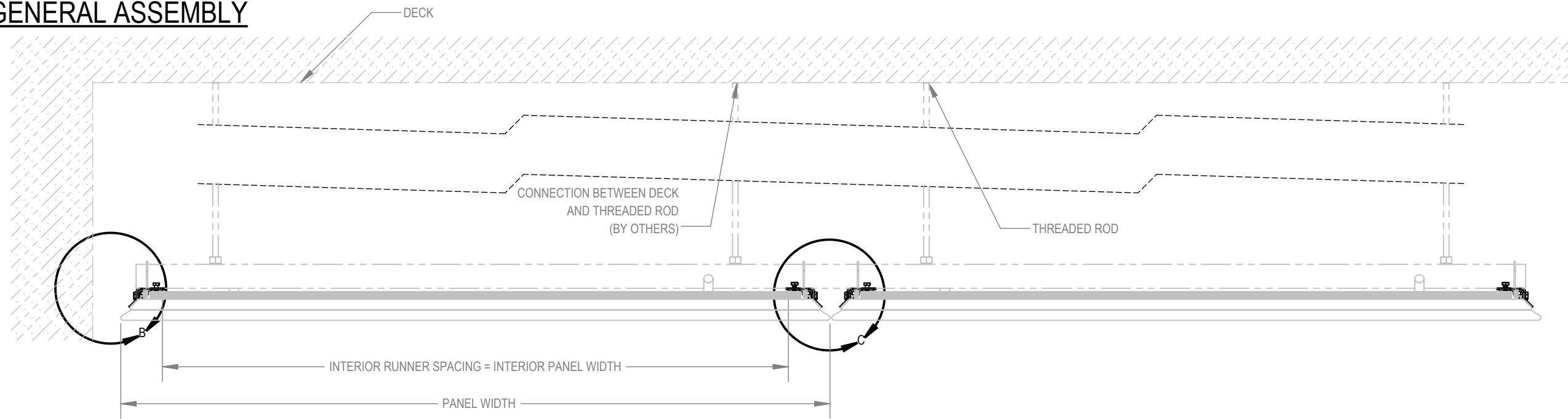
SUBMITTAL NUMBER	273901	SHEET 2 OF 8	SIZE B
------------------	---------------	--------------	---------------

© COPYRIGHT PRICE INDUSTRIES 2022

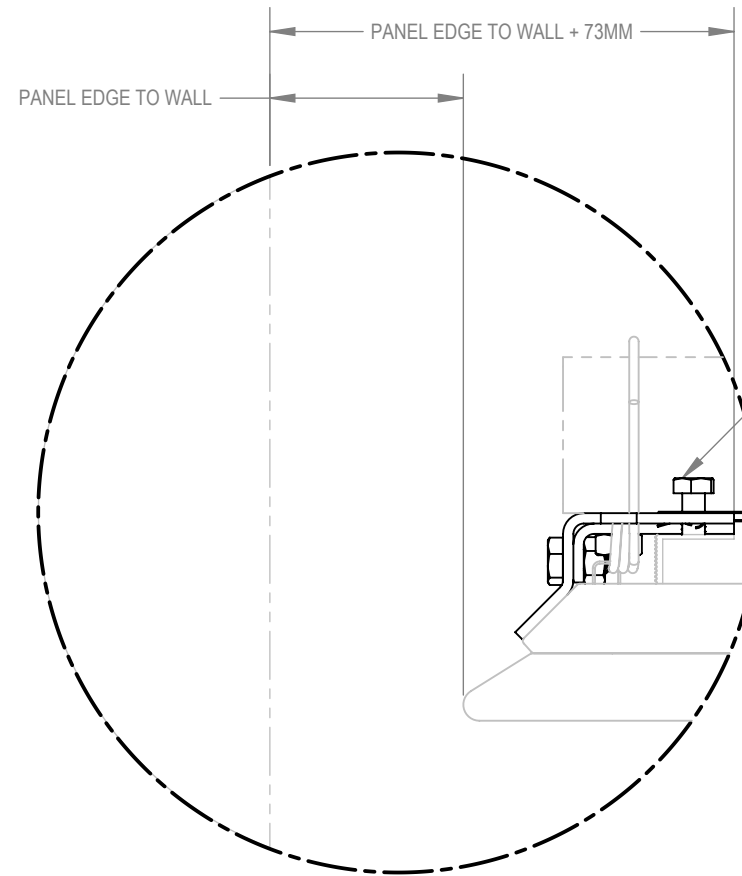
A B C D E

SUBMITTAL

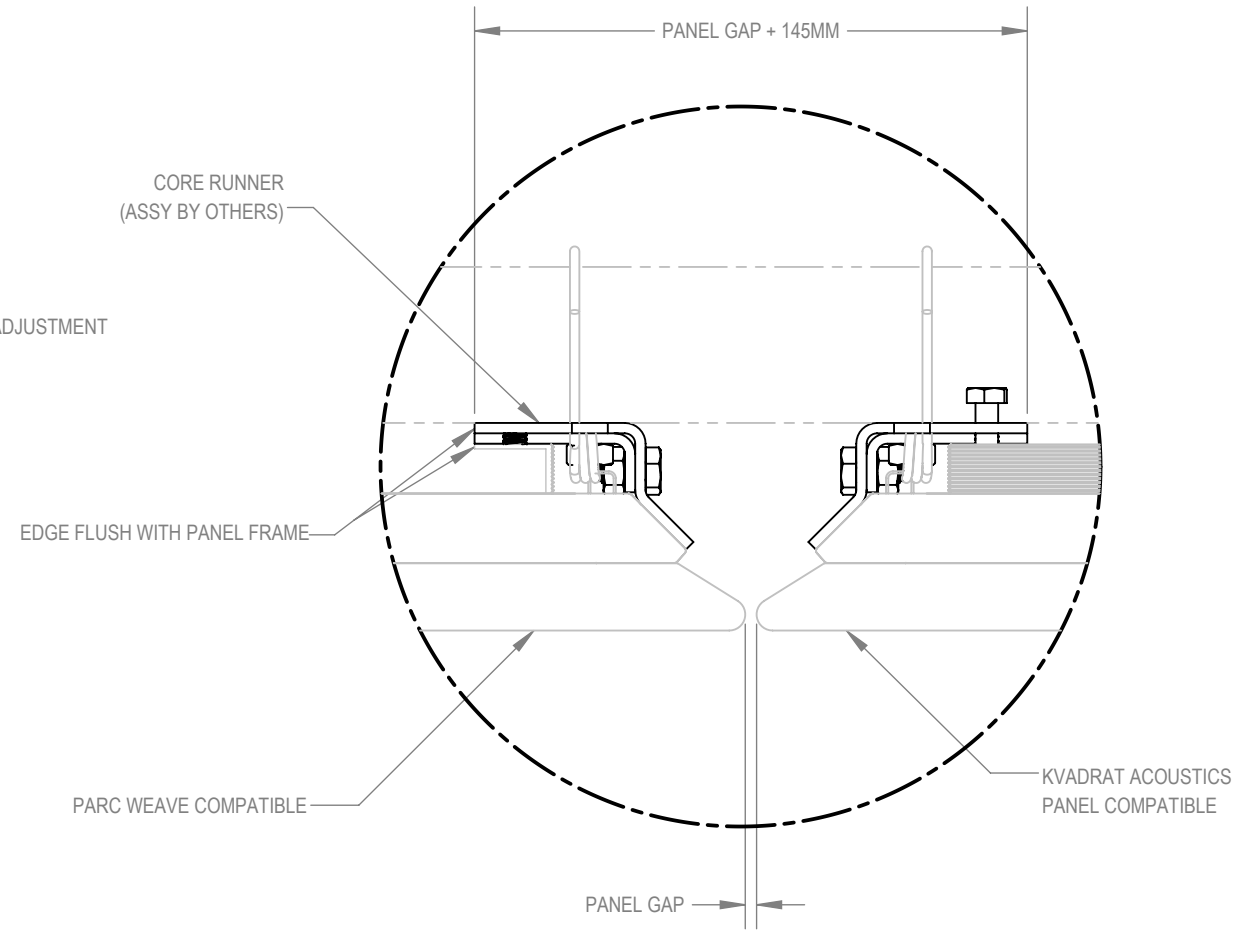
GENERAL ASSEMBLY



ELEVATION VIEW



DETAIL B



DETAIL C
CLIP NUTS HIDDEN



CONSTRUCTION:

- RUNNERS
 - o .110" [2.8MM] THICK STEEL SHEET
- SPLICE PLATE
 - o .110" [2.8MM] THICK STEEL SHEET
- NODE BRACKET
 - o .110" [2.8MM] THICK STEEL SHEET

FINISH:

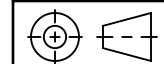
- ALL HARDWARE: MILL FINISH UNLESS OTHERWISE SPECIFIED

ASSEMBLY AND INSTALLATION

- ALL COMPONENTS SHOWN ARE FACTORY ASSEMBLED BY PARC UNLESS OTHERWISE NOTED
- ALL INSTALLATION BY OTHERS AND METHODS SHOWN ARE NOTIONAL
- (ASSY BY OTHERS): PROVIDED BY PARC, FIELD ASSEMBLED BY OTHERS
- (BY OTHERS): PROVIDED AND FIELD ASSEMBLED BY OTHERS

NOTES:

- DIMENSIONS SHOWN IN PARENTHESES ARE FOR REFERENCE ONLY (X.XX)
- METRIC DIMENSIONS SHOWN IN BRACKETS [X.XX]
- PRODUCT FINISH MAY VARY IN TONE, GLOSS AND TEXTURE; VARIATIONS ARE WITHIN PARC QUALITY STANDARDS
- TBC: DETAILS TO BE CONFIRMED
- CORE MASS = 1.9 KG/LIN. M
- CORE MASS INCLUDES RUNNER, SPLICE, NODE BRACKET, AND HARDWARE



ALL DIMENSIONS IN INCHES UNLESS OTHERWISE SPECIFIED

TOLERANCES UNLESS OTHERWISE SPECIFIED			
LINEAR	X.X ± .06	X.XX ± .03	X.XXX ± .01
ANGULAR	X ± 1	X.X ± .5	X.XX ± .25
			DEGREES

PROJECT	CORE
---------	-------------

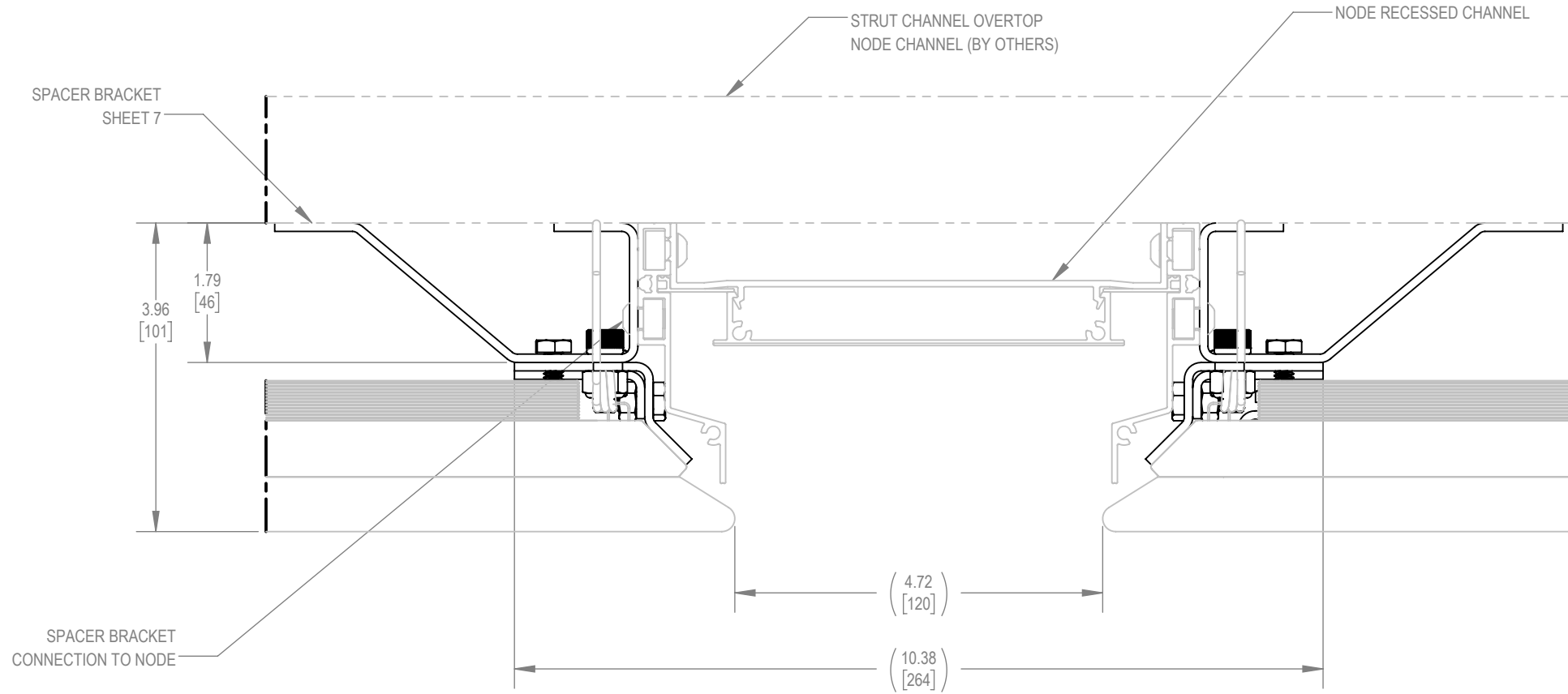
DRAWING TITLE	STANDARD METRIC SUBMITTAL
---------------	----------------------------------

SUBMITTAL NUMBER	273901	SHEET	3 OF 8	SIZE	B
------------------	---------------	-------	--------	------	----------

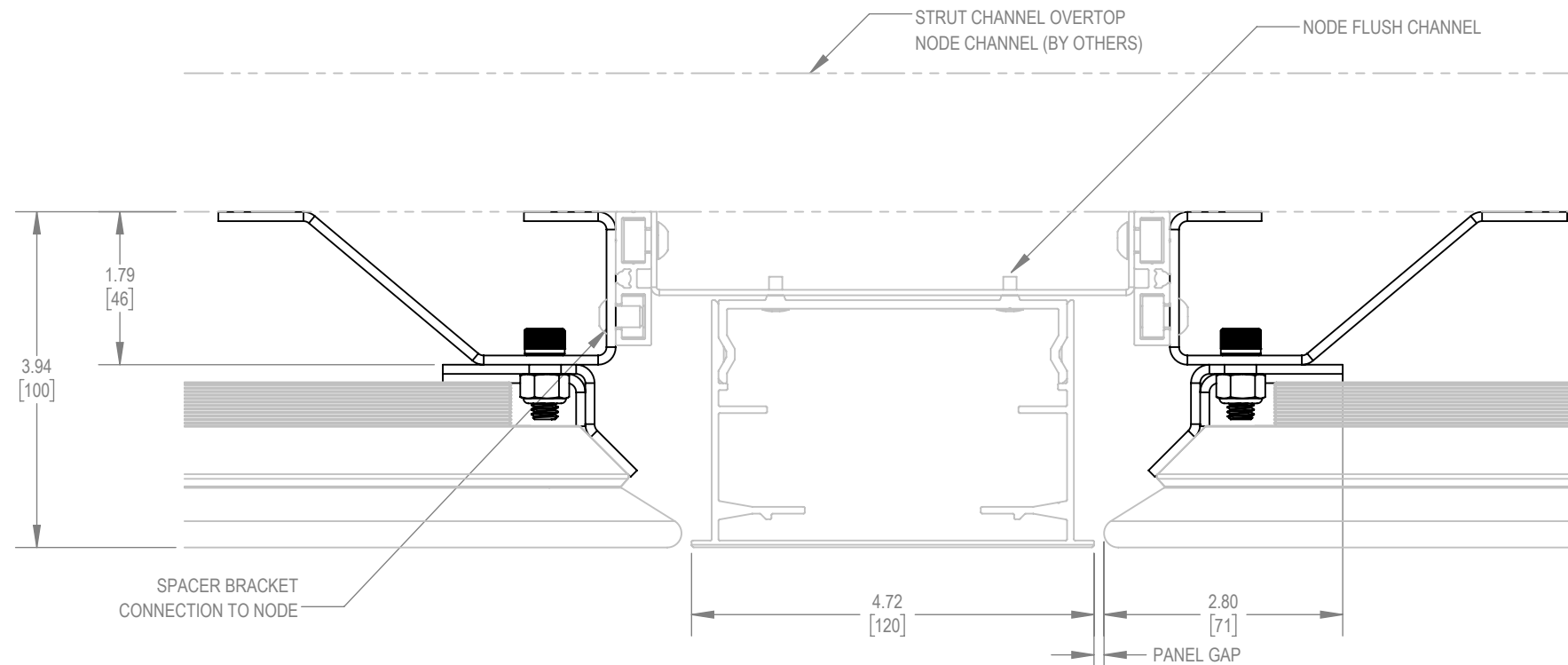
© COPYRIGHT PRICE INDUSTRIES 2022

A B C D E

GENERAL ASSEMBLY



FRONT VIEW
NODE RECESSED CHANNEL INTEGRATION



FRONT VIEW
NODE FLUSH CHANNEL INTEGRATION

CONSTRUCTION:

- RUNNERS
 - o .110" [2.8MM] THICK STEEL SHEET
- SPLICE PLATE
 - o .110" [2.8MM] THICK STEEL SHEET
- NODE BRACKET
 - o .110" [2.8MM] THICK STEEL SHEET

FINISH:

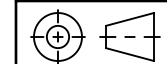
- ALL HARDWARE: MILL FINISH UNLESS OTHERWISE SPECIFIED

ASSEMBLY AND INSTALLATION

- ALL COMPONENTS SHOWN ARE FACTORY ASSEMBLED BY PARC UNLESS OTHERWISE NOTED
- ALL INSTALLATION BY OTHERS AND METHODS SHOWN ARE NOTIONAL
- (ASSY BY OTHERS): PROVIDED BY PARC, FIELD ASSEMBLED BY OTHERS
- (BY OTHERS): PROVIDED AND FIELD ASSEMBLED BY OTHERS

NOTES:

- DIMENSIONS SHOWN IN PARENTHESES ARE FOR REFERENCE ONLY (X.XX)
- METRIC DIMENSIONS SHOWN IN BRACKETS [X.XX]
- PRODUCT FINISH MAY VARY IN TONE, GLOSS AND TEXTURE; VARIATIONS ARE WITHIN PARC QUALITY STANDARDS
- TBC: DETAILS TO BE CONFIRMED
- CORE MASS = 1.9 KG/LIN. M
- CORE MASS INCLUDES RUNNER, SPLICE, NODE BRACKET, AND HARDWARE



ALL DIMENSIONS IN INCHES UNLESS OTHERWISE SPECIFIED

TOLERANCES UNLESS OTHERWISE SPECIFIED			
LINEAR	X.X ±.06	X.XX ±.03	X.XXX ±.01 INCHES
ANGULAR	X ±1	X.X ±.5	X.XX ±.25 DEGREES

PROJECT
CORE

DRAWING TITLE
STANDARD METRIC SUBMITTAL

SUBMITTAL NUMBER	273901	SHEET 4 OF 8	SIZE B
------------------	---------------	--------------	---------------

CONSTRUCTION:

- ITEM DESCRIPTION
- o ALUMINUM EXTRUSION
- ITEM DESCRIPTION
- o MATERIAL, XX GA

FINISH:

- STATE STANDARD PRICE FINISH CODE OR CUSTOM FINISH
- ALL HARDWARE: MILL FINISH UNLESS OTHERWISE SPECIFIED

ELECTRICAL SERVICE

- 120VAC, 60HZ, SINGLE-PHASE
- o MAX OPERATING CURRENT: 0.0A
- o MIN CIRCUIT AMPACITY: 0.0A
- o MAX OVERCURRENT PROTECTION: 0.0A

MECHANICAL SERVICE

- SUPPLY AIR
- o 300CFM @ 25°C
- WATER SUPPLY
- o 2.5GPM @ 60PSI

CONTROLS

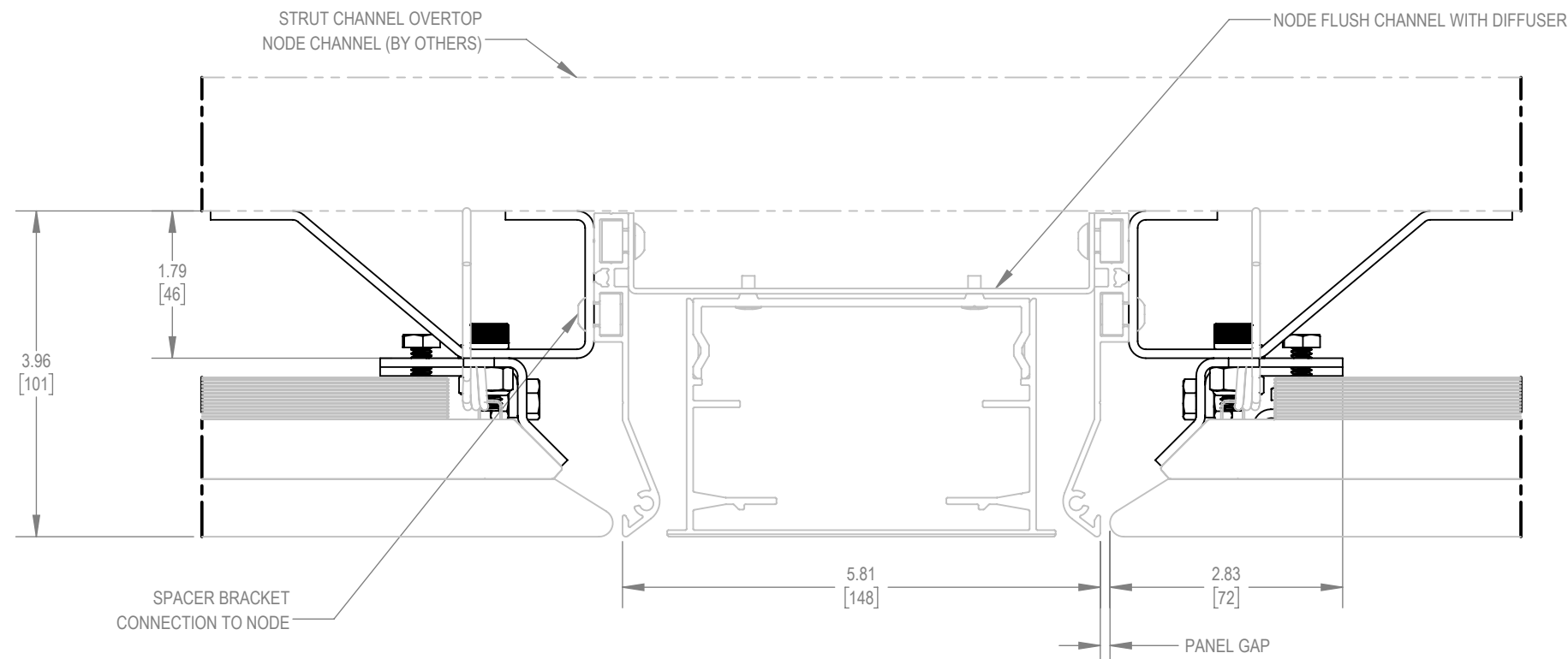
- CXY##### BY PARC
- CONTROLS BY OTHERS

ASSEMBLY AND INSTALLATION

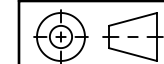
- ALL COMPONENTS SHOWN ARE FACTORY ASSEMBLED BY PARC UNLESS OTHERWISE NOTED
- ALL INSTALLATION BY OTHERS AND METHODS SHOWN ARE NOTIONAL
- (ASSY BY OTHERS): PROVIDED BY PARC, FIELD ASSEMBLED BY OTHERS
- (BY OTHERS): PROVIDED AND FIELD ASSEMBLED BY OTHERS

NOTES:

- DIMENSIONS SHOWN IN PARENTHESES ARE FOR REFERENCE ONLY (X.XX)
- METRIC DIMENSIONS SHOWN IN BRACKETS [X.XX]
- PRODUCT FINISH MAY VARY IN TONE, GLOSS AND TEXTURE; VARIATIONS ARE WITHIN PARC QUALITY STANDARDS
- TBC: DETAILS TO BE CONFIRMED



FRONT VIEW
NODE FLUSH CHANNEL INTEGRATION



ALL DIMENSIONS IN INCHES UNLESS OTHERWISE SPECIFIED

TOLERANCES UNLESS OTHERWISE SPECIFIED			
LINEAR	X.X ±.06	X.XX ±.03	X.XXX ±.01 INCHES
ANGULAR	X ±1	X.X ±.5	X.XX ±.25 DEGREES

PROJECT **CORE**

DRAWING TITLE **STANDARD METRIC SUBMITTAL**

SUBMITTAL NUMBER	273901	SHEET	5 OF 8	SIZE	B
------------------	---------------	-------	--------	------	----------

SUBMITTAL

CORE - STRUCTURE

STYLE:

RUNNER

LENGTH:

3000MM

FINISH:

MILL
 B-17 BLACK



CONSTRUCTION:

- RUNNERS
 - o .110" [2.8MM] THICK STEEL SHEET
- SPLICE PLATE
 - o .110" [2.8MM] THICK STEEL SHEET
- NODE BRACKET
 - o .110" [2.8MM] THICK STEEL SHEET

FINISH:

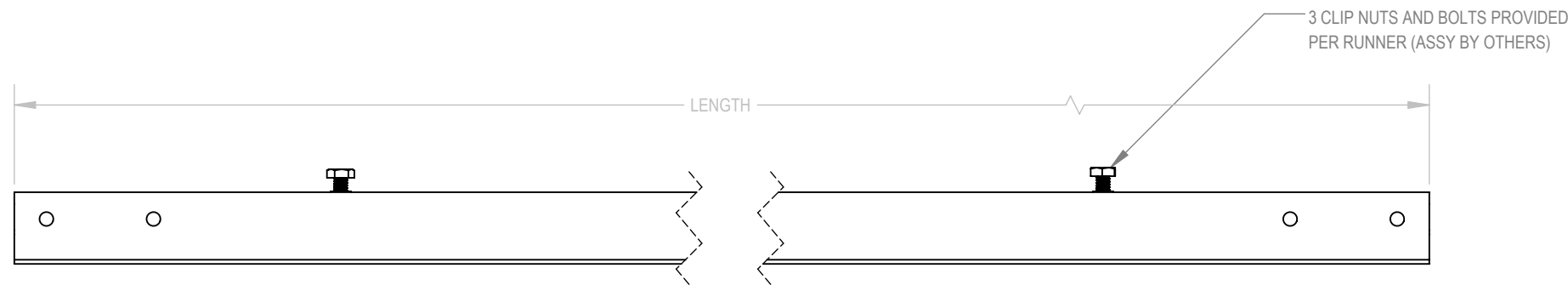
- ALL HARDWARE: MILL FINISH UNLESS OTHERWISE SPECIFIED

ASSEMBLY AND INSTALLATION

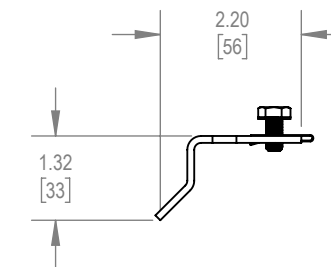
- ALL COMPONENTS SHOWN ARE FACTORY ASSEMBLED BY PARC UNLESS OTHERWISE NOTED
- ALL INSTALLATION BY OTHERS AND METHODS SHOWN ARE NOTIONAL
- (ASSY BY OTHERS): PROVIDED BY PARC, FIELD ASSEMBLED BY OTHERS
- (BY OTHERS): PROVIDED AND FIELD ASSEMBLED BY OTHERS

NOTES:

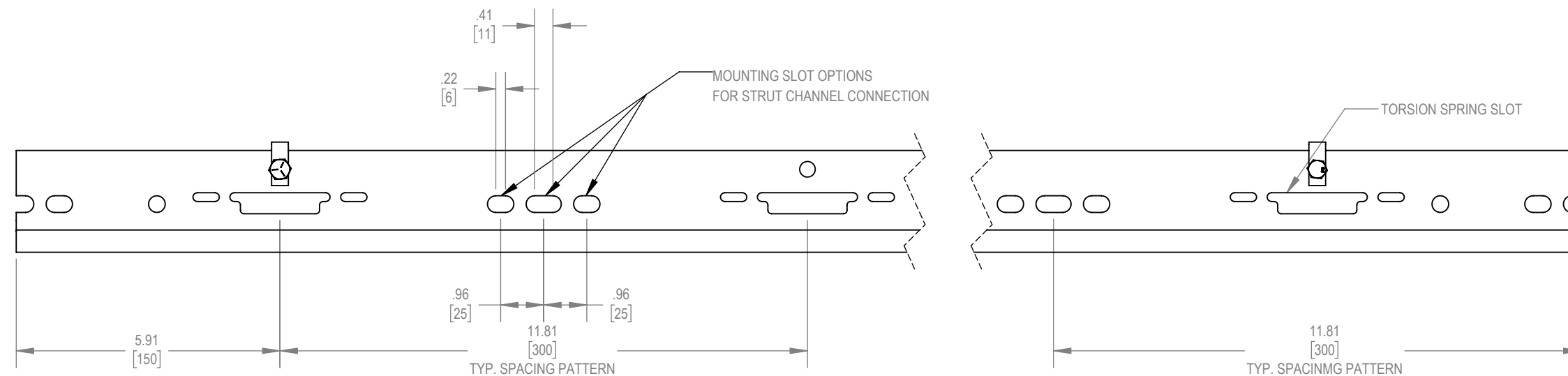
- DIMENSIONS SHOWN IN PARENTHESES ARE FOR REFERENCE ONLY (X.XX)
- METRIC DIMENSIONS SHOWN IN BRACKETS [X.XX]
- PRODUCT FINISH MAY VARY IN TONE, GLOSS AND TEXTURE; VARIATIONS ARE WITHIN PARC QUALITY STANDARDS
- TBC: DETAILS TO BE CONFIRMED
- CORE MASS = 1.9 KG/LIN. M
- CORE MASS INCLUDES RUNNER, SPLICE, NODE BRACKET, AND HARDWARE



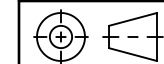
SIDE VIEW



SIDE VIEW



TOP VIEW



ALL DIMENSIONS IN INCHES UNLESS OTHERWISE SPECIFIED

TOLERANCES UNLESS OTHERWISE SPECIFIED				
LINEAR	X.X ± .06	X.XX ± .03	X.XXX ± .01	INCHES
ANGULAR	X ± 1	X.X ± .5	X.XX ± .25	DEGREES

PROJECT
CORE

DRAWING TITLE
STANDARD METRIC SUBMITTAL

SUBMITTAL NUMBER	273901	SHEET 6 OF 8	SIZE B
------------------	---------------	--------------	---------------

© COPYRIGHT PRICE INDUSTRIES 2022

A B C D E

SUBMITTAL

CORE - SPLICE

STYLE:

RUNNER

FINISH:

MILL
 B-17 BLACK

CONSTRUCTION:

- RUNNERS
 - o .110" [2.8MM] THICK STEEL SHEET
- SPLICE PLATE
 - o .110" [2.8MM] THICK STEEL SHEET
- NODE BRACKET
 - o .110" [2.8MM] THICK STEEL SHEET

FINISH:

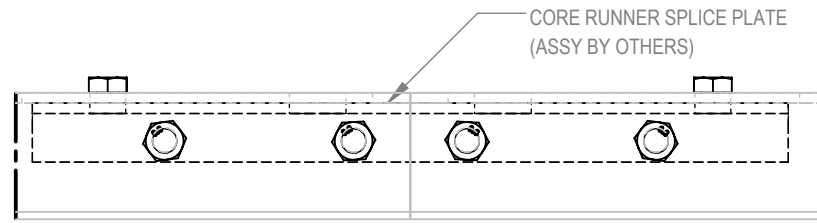
- ALL HARDWARE: MILL FINISH UNLESS OTHERWISE SPECIFIED

ASSEMBLY AND INSTALLATION

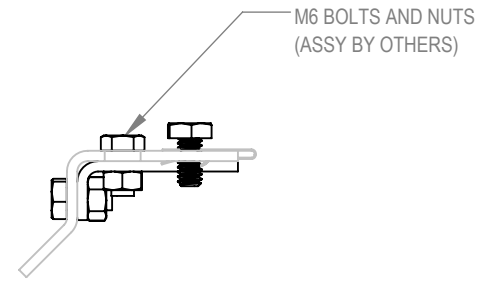
- ALL COMPONENTS SHOWN ARE FACTORY ASSEMBLED BY PARC UNLESS OTHERWISE NOTED
- ALL INSTALLATION BY OTHERS AND METHODS SHOWN ARE NOTIONAL
- (ASSY BY OTHERS): PROVIDED BY PARC, FIELD ASSEMBLED BY OTHERS
- (BY OTHERS): PROVIDED AND FIELD ASSEMBLED BY OTHERS

NOTES:

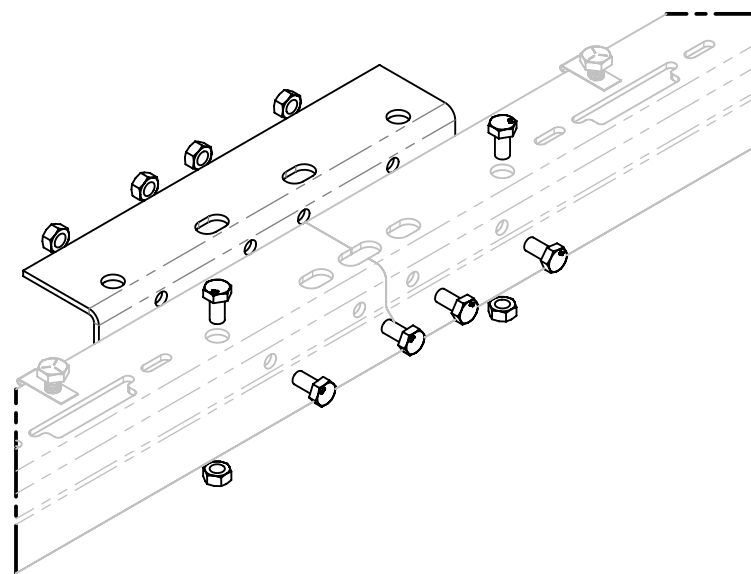
- DIMENSIONS SHOWN IN PARENTHESES ARE FOR REFERENCE ONLY (X.XX)
- METRIC DIMENSIONS SHOWN IN BRACKETS [X.XX]
- PRODUCT FINISH MAY VARY IN TONE, GLOSS AND TEXTURE; VARIATIONS ARE WITHIN PARC QUALITY STANDARDS
- TBC: DETAILS TO BE CONFIRMED
- CORE MASS = 1.9 KG/LIN. M
- CORE MASS INCLUDES RUNNER, SPLICE, NODE BRACKET, AND HARDWARE



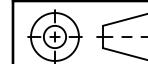
FRONT VIEW



SIDE VIEW



ISOMETRIC VIEW
EXPLODED



ALL DIMENSIONS IN INCHES UNLESS OTHERWISE SPECIFIED

TOLERANCES UNLESS OTHERWISE SPECIFIED				
LINEAR	X.X ±.06	X.XX ±.03	X.XXX ±.01	INCHES
ANGULAR	X ±1	X.X ±.5	X.XX ±.25	DEGREES

PROJECT	CORE		
---------	-------------	--	--

DRAWING TITLE	STANDARD METRIC SUBMITTAL		
---------------	----------------------------------	--	--

SUBMITTAL NUMBER	273901	SHEET 7 OF 8	SIZE B
------------------	---------------	--------------	---------------

SUBMITTAL

CORE - CONNECTION

STYLE:

NODE

FINISH:

MILL
 B-17 BLACK

CONSTRUCTION:

- RUNNERS
 - o .110" [2.8MM] THICK STEEL SHEET
- SPLICE PLATE
 - o .110" [2.8MM] THICK STEEL SHEET
- NODE BRACKET
 - o .110" [2.8MM] THICK STEEL SHEET

FINISH:

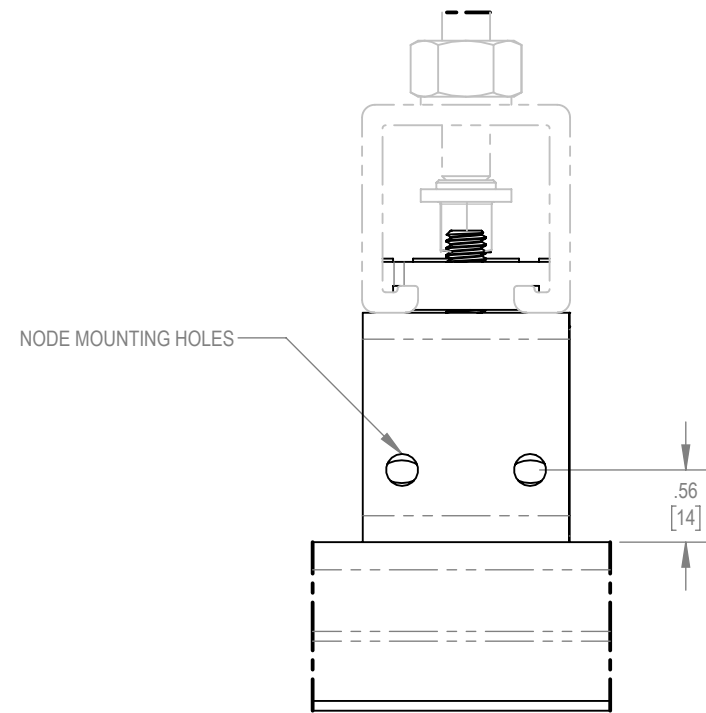
- ALL HARDWARE: MILL FINISH UNLESS OTHERWISE SPECIFIED

ASSEMBLY AND INSTALLATION

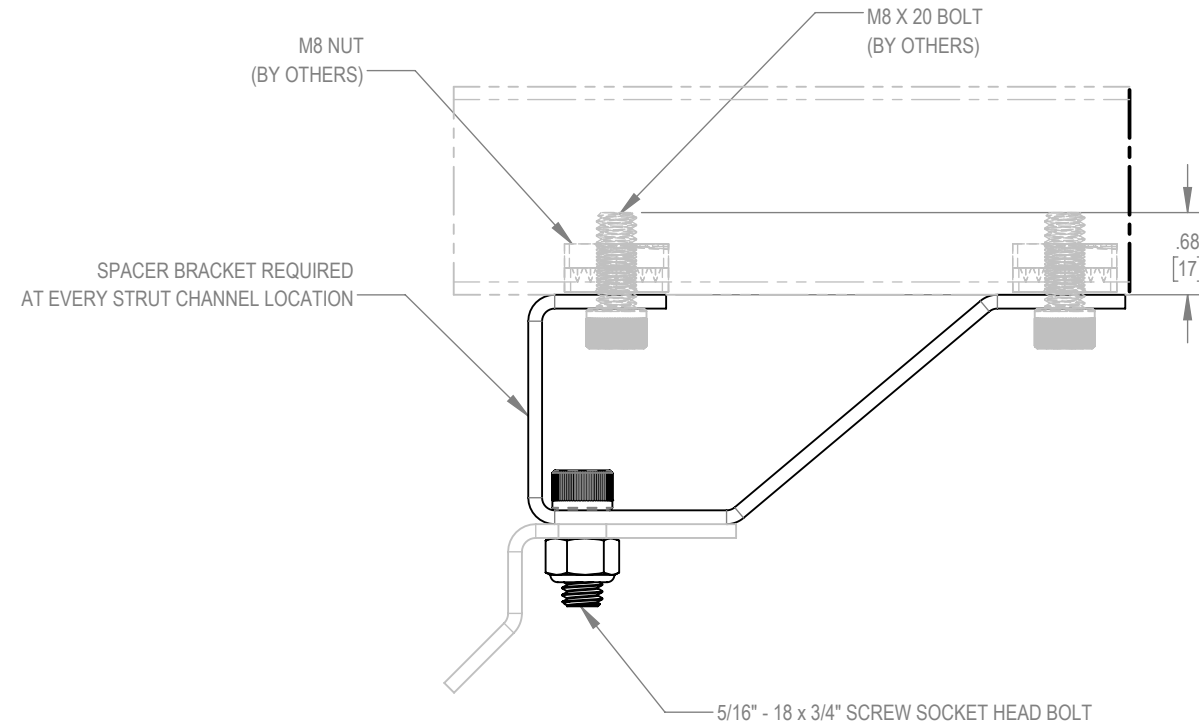
- ALL COMPONENTS SHOWN ARE FACTORY ASSEMBLED BY PARC UNLESS OTHERWISE NOTED
- ALL INSTALLATION BY OTHERS AND METHODS SHOWN ARE NOTIONAL
- (ASSY BY OTHERS): PROVIDED BY PARC, FIELD ASSEMBLED BY OTHERS
- (BY OTHERS): PROVIDED AND FIELD ASSEMBLED BY OTHERS

NOTES:

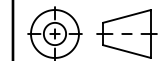
- DIMENSIONS SHOWN IN PARENTHESES ARE FOR REFERENCE ONLY (X.XX)
- METRIC DIMENSIONS SHOWN IN BRACKETS [X.XX]
- PRODUCT FINISH MAY VARY IN TONE, GLOSS AND TEXTURE; VARIATIONS ARE WITHIN PARC QUALITY STANDARDS
- TBC: DETAILS TO BE CONFIRMED
- CORE MASS = 1.9 KG/LIN. M
- CORE MASS INCLUDES RUNNER, SPLICE, NODE BRACKET, AND HARDWARE



FRONT VIEW



SIDE VIEW



ALL DIMENSIONS IN INCHES UNLESS OTHERWISE SPECIFIED

TOLERANCES UNLESS OTHERWISE SPECIFIED				
LINEAR	X.X ± .06	X.XX ± .03	X.XXX ± .01	INCHES
ANGULAR	X ± 1	X.X ± .5	X.XX ± .25	DEGREES

PROJECT	CORE
---------	-------------

DRAWING TITLE	STANDARD METRIC SUBMITTAL
---------------	----------------------------------

SUBMITTAL NUMBER	273901	SHEET	8 OF 8	SIZE	B
------------------	---------------	-------	--------	------	----------