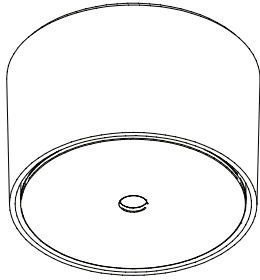


Ceiling Rose

The Ceiling Rose is a flexible receiver for pendent lighting fixtures and other third party electrical and mechanical devices.



Product Features

- Modular mechanical and electrical connection to the Node system
- Easy to maintain
- Aperture sized to accommodate third party devices

Specifications

	Diameter	Height
Recessed Channel Mount	90 mm (3.54 in.)	58 mm (2.28 in.)
Flush Channel Mount	90 mm (3.54 in.)	23 mm (0.90 in.)