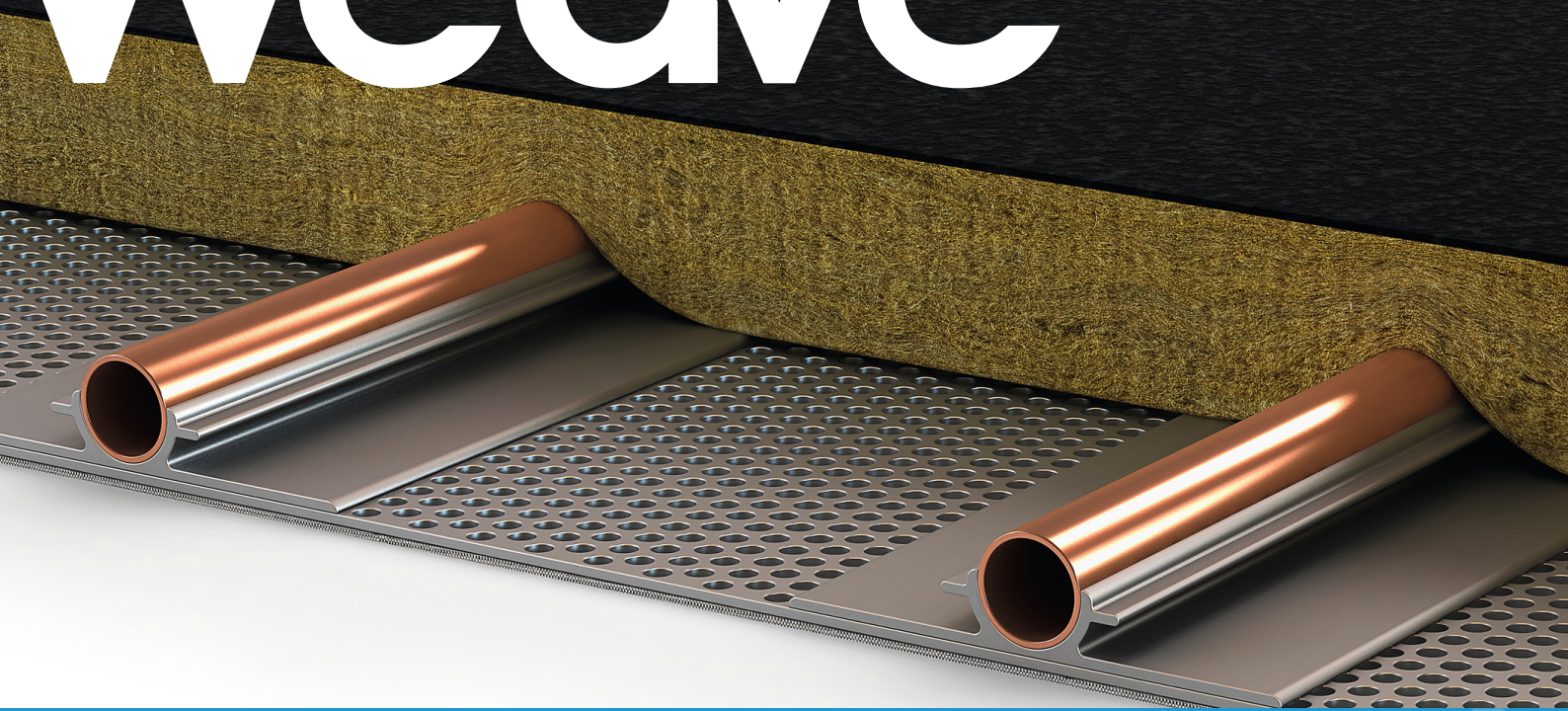


# weave™



## Weave On Site Cut-out Manual

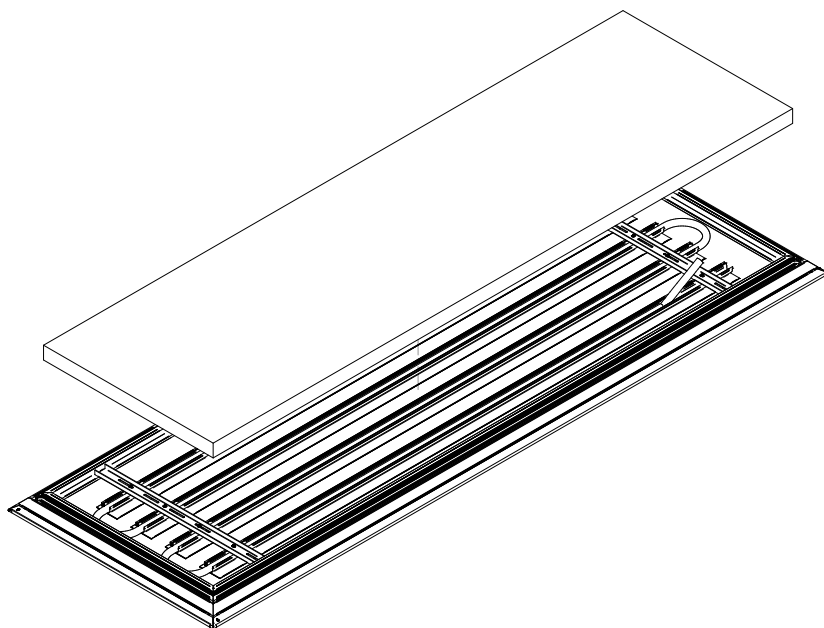
Weave Radiant Textile Panels

### TOOLS REQUIRED

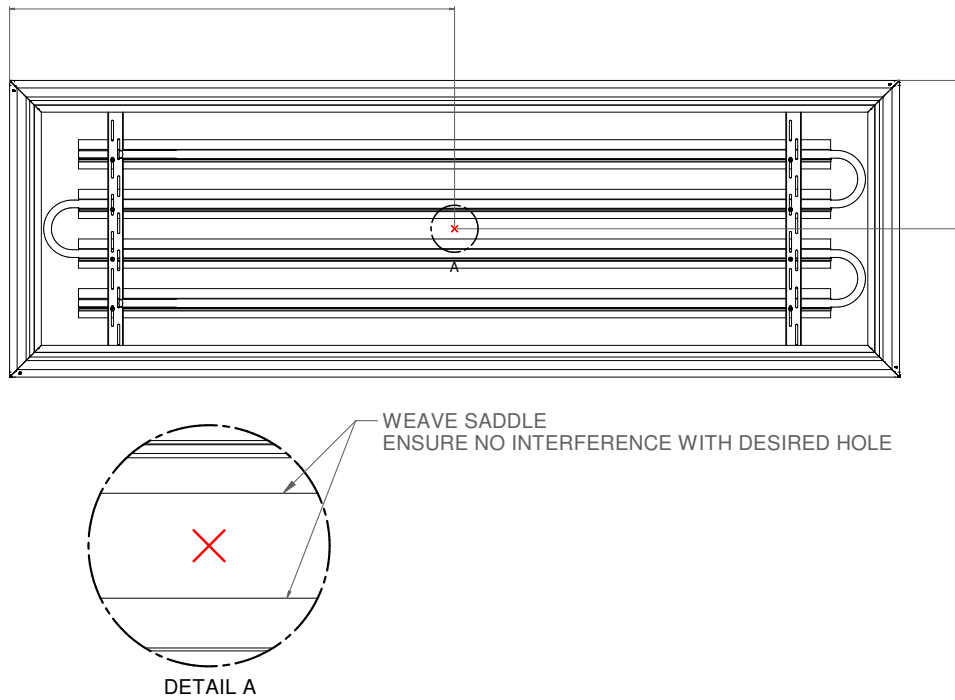
- Hot Knife
- Pointed Tip Soldering Iron (optional)
- Drill Bit
- Cordless Drill
- Vacuum

### CUT-OUT INSTRUCTIONS

- I. Remove the insulation from the panel and set safely to the side.

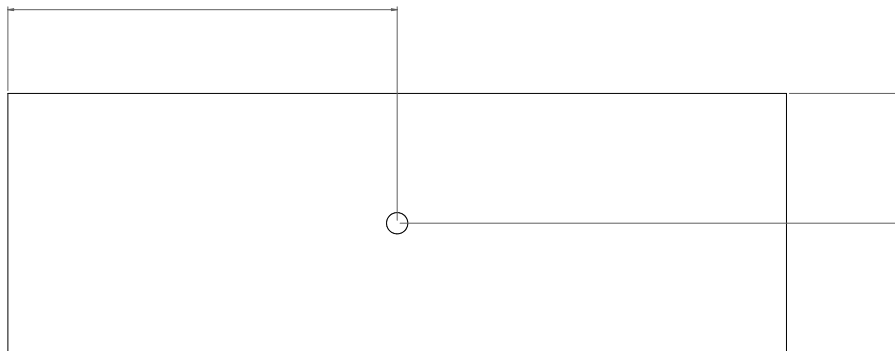


2. Check location of cut-out on backside of panel. Ensure the hole would not interfere with a copper coil or its aluminum saddle.

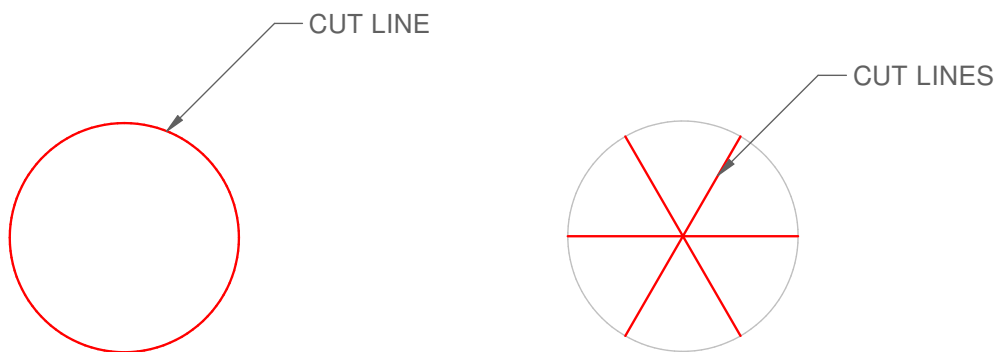


If indicated hole position interferes with a coil or saddle, determine a new location without obstructions.

3. Flip panel textile face up and place on a flat stable surface. Mark out location of hole by drawing a circle in the desired location, of the desired size.

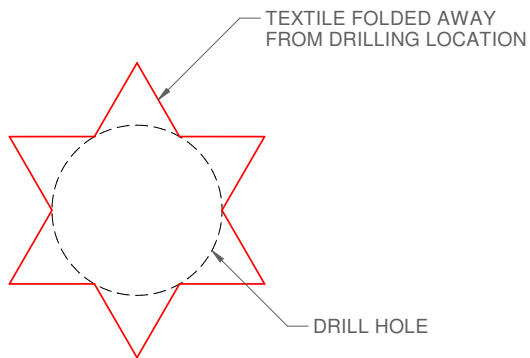


4. For holes  $\text{\O}50\text{mm}$  and lower, trace the marked circle with a hot knife to cut out the profile in the textile. Cut lines indicated in red.



For holes larger than  $\text{\O}50\text{mm}$ , cut lines through the center of the marked circle to create "pie" shaped cut-outs, cut lines indicated in red.

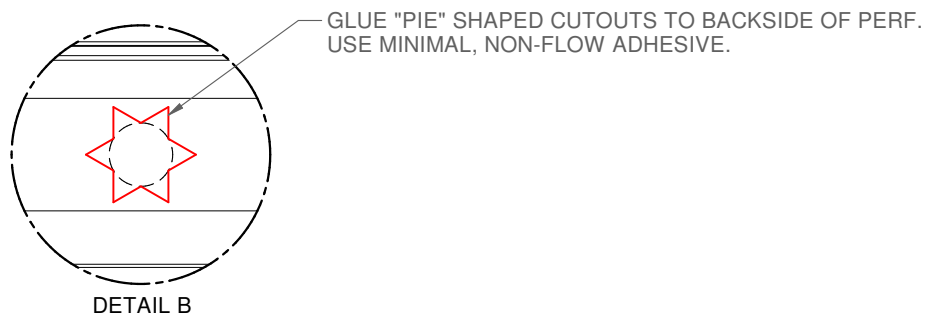
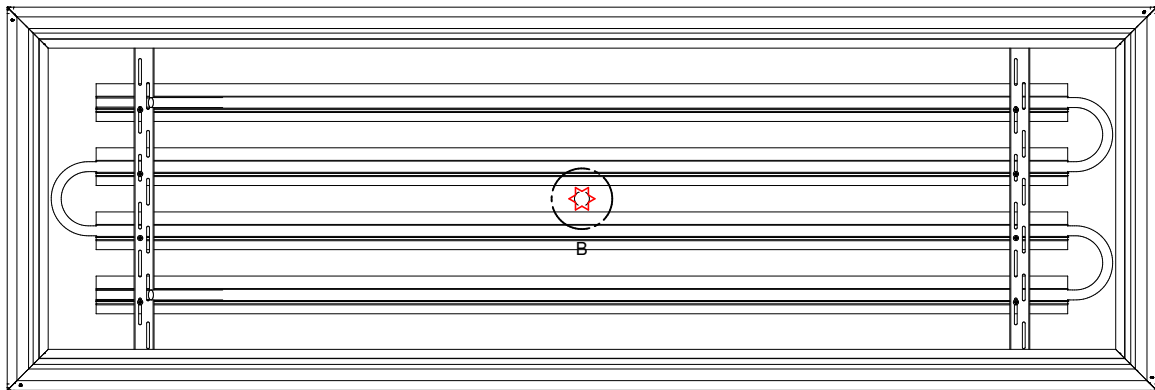
- With the panel remaining with the textile face up, move the pie shaped textile pieces (if applicable) away from the drilling zone. Drill your hole into the aluminum perforated sheet.



## CAUTION!

**ENTANGLEMENT OF DRILL BIT WITH TEXTILE CAN RESULT IN DAMAGE TO ENTIRE TEXTILE SURFACE.**

- Once hole is drilled, vacuum burrs and metal shavings away. Metal shavings caught between textile and perf can have an undesirable appearance on the face of the textile.
- Glue textile to backside of perf (if applicable).



- Install your device to the panel. It is recommended the device has a trim ring to hide the cut edges.